

QLEX-TRI-240(PL)



QLEX-TRI-240(PL)

PRODUCT SPECIFICATION

QLEX-TRI-240(PL)

- Explosion proof LED luminaires/work light designed for use in explosive gas environments with Ex d IIC rating
- Enhanced durability with aluminum housing and polycarbonate lens tube
- Slim and compact structure realize aesthetically pleasing design
- Semi-permanent service life with long-lasting LED light source

Materials Side cover-Al, Lens-PC, Bracket-PC
Ambient operating temperature -40°C ≤ Tamb ≤ +60°C
Protection rating KCs - Ex d IIC T6
 NEPSI, CCC - Ex db IIC T6 Gb
Certificates KCs, NEPSI, CE, CCC

QLEX-TRI-240(PL) Explosion Proof LED Luminaires/Work Light

Optics Specifications	
Model	QLEX-TRI-240(PL)
Lens color	Translucent
Light color	Cooldaylight
Color temperature	6,000-7,000K
Luminous flux	DC 650lm
Illumination(at 1m)	DC 310Lux
Specifications	
Model	QLEX-TRI-240(PL)
Voltage	DC24V
Range for operation voltage	DC21.5V-26.5V
Power consumption	8.6W
Insulation resistance	Min. 100MΩ(500V DC mega ohm meter)
Withstanding voltage	DC: 500VAC, 60Hz, 1 minute
Protection rating	IP66/67
Materials	Side cover-Al, Lens-PC, Bracket-PC
Certifications	
Weight(Approx.)	0.62Kg

Ordering Specification

QLEX-TRI	-	240(PL)	-	24	-	KCs
[Model number]		[Product length]		[Voltage]		[Certificates]
QLEX-TRI		240-240mm		24-DC24V		KCs NEPSI(CCC)

Cautions in use

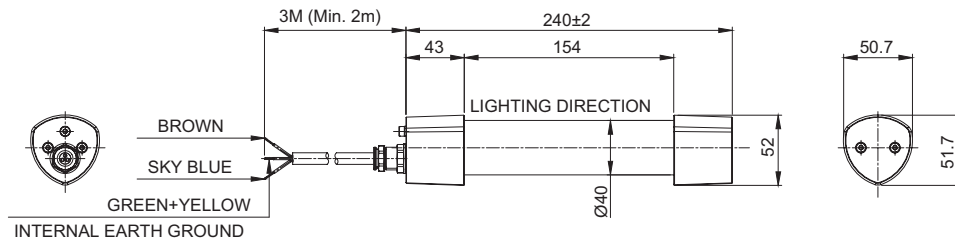
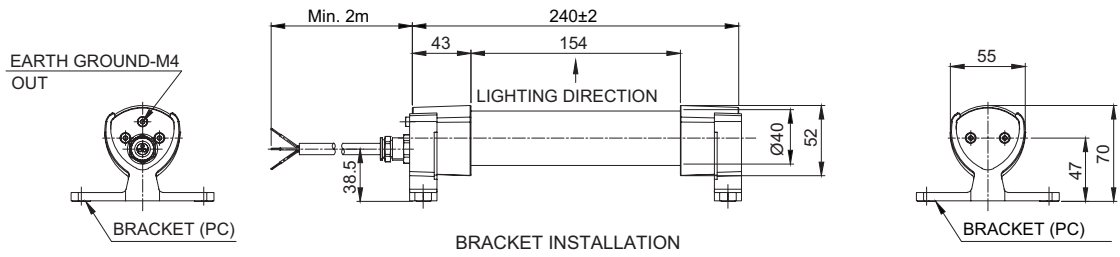
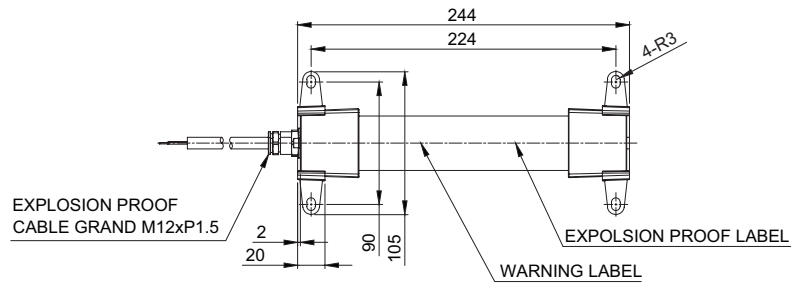
· Contact structure of an explosion proof product must be a qualified part we provide. Please do not disassemble, assemble, modify or repair arbitrarily.



Technical Diagram

Units: mm

·QLEX-TRI-240(PL)



QLEX-TRI-240(PL) PRODUCT LAY-OUT