

### PRODUCT SPECIFICATION

EMCL50U

**Materials** Housing-Al, Lens-PC  
**Ambient operating temperature** -25°C to +55°C  
**Volume** Max. 85dB at 1m  
**Protection rating**  
 Standard type-IP67, Built-in buzzer type-IP20

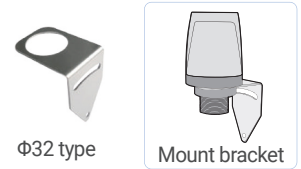
- Small indicator light capable of transmitting three signal colors with one indicator light
- By applying a translucent lens, the unique color of the LED is emitted subtly when turned on
- Built-in buzzer type available



EMCL50U

### Bracket

- It can be installed on the wall by adopting wall mounting type bracket.

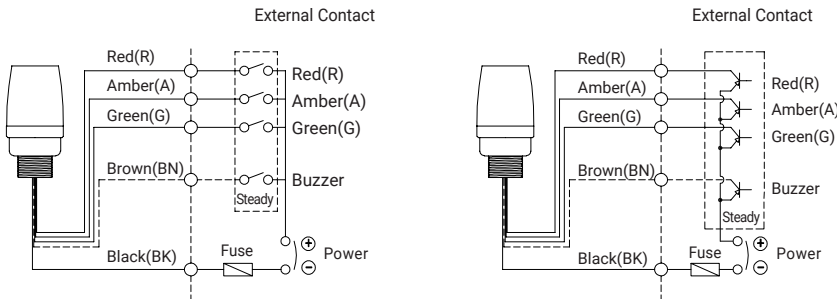


### EMCL50U Industrial LED Beacon

Model number	Voltage	Current	Certificates	Weight	Color
EMCL50U Steady	DC24V	41mA	CE	0.19kg	● R-红 ● A-黄 ● G-绿
EMCL50U-BZ Steady w/built-in buzzer					

### Wiring Instructions

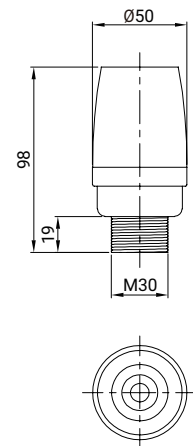
·EMCL50U / EMCL50U-BZ



### Technical Diagram

Units: mm

·EMCL50U / EMCL50U-BZ



### M12 connector equipped

5PIN CONNECTOR	No.	Color	Wiring
	1	RED	Pin 1
	2	AMBER	Pin 2
	3	GREEN	Pin 3
	4	Common	Pin 4
	5	Buzzer	Pin 5

### Ordering Specification

EMCL50U	-	24	-	RAG	-	M12
[Model number] EMCL50U EMCL50U-BZ		[Voltage] 24-DC24V		[Color] ● R-Red ● A-Amber ● G-Green		[Cable] None-External contact M12-M12 connector type

### Customization

- M12 Fiev-core cable/1.5m
- NPN type