

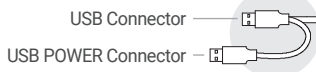
QTG70(M)L-USB



QTG70(M)L-USB Series

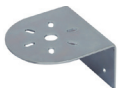
Wiring Instructions

- Connect both USB connector and USB power connector to PC



Customization

- Customized color arrangement available
- Customized pole length available
- Wall mount bracket



Wall mount bracket TWS80



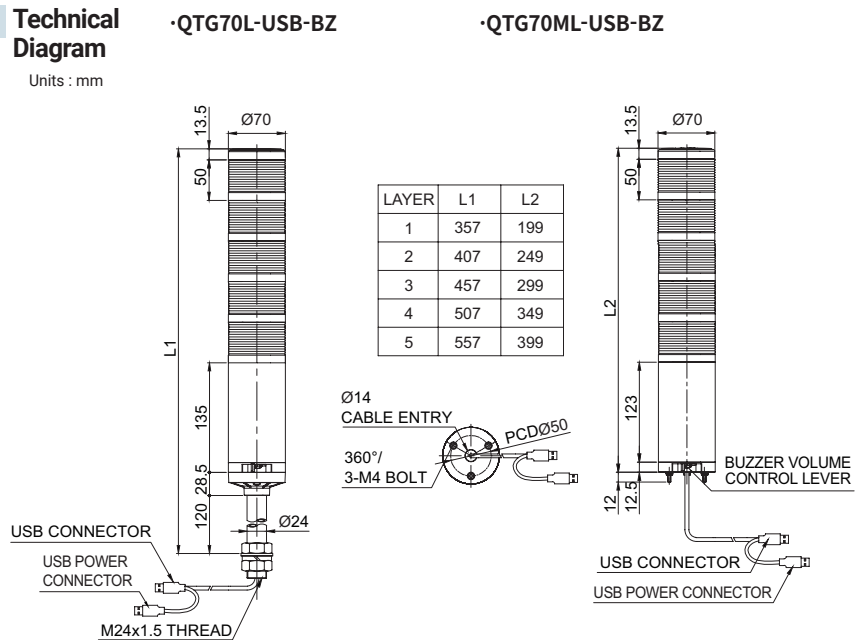
Wall mount bracket TWA80

QTG70(M)L-USB Ø70mm USB Tower Light

Model number	Layers	Certificates	Color
QTG70(M)L-USB-BZ	1 layer	CE	1 layer: ● R
QTGA70(M)L-USB-BZ	2 layers		2 layers: ● R ● G
	3 layers		3 layers: ● R ● A ● G
	4 layers		4 layers: ● R ● A ● G ● B
	5 layers		5 layers: ● R ● A ● G ● B ● W

Technical Diagram

Units : mm



Mounting bracket

Standard	LB24	LW24	QZ24	SZ24	QL24	SL24
Steel	Steel	ABS	ABS	AI	ABS	AI

※ Please refer to [Tower Light Mounting bracket] on this catalogue for detailed dimensions

Ordering Specifications

QTG70L-USB-BZ	-	3	-	RAG	-	LW24
[Model number]		[Layers]		[Color]		[Bracket]
QTG70L-USB-BZ		1-1 Layers		● R-Red		None-Standard
QTG70ML-USB-BZ		2-2 Layers		● A-Amber		Bracket
QTGA70L-USB-BZ		3-3 Layers		● G-Green		-LB24 -LW24
QTGA70ML-USB-BZ		4-4 Layers		● B-Blue		-QZ24 -SZ24
		5-5 Layers		○ W-White		-QL24 -SL24

※ Mount brackets are available for the pole mount type(QTG70L-USB Series) only