

QNE Series

Flame proof LED signal light that features steady/flashing, strobe, and simulated revolving light functions in one unit



QNE



QNE-SUS

PRODUCT SPECIFICATION

QNE | QNE-SUS

Materials Lens-Tempered glass, Filter-PC, Bracket-ST316L, Protection cage-ST316, Housing-AI(QNE), ST316L(QNE-SUS)

Ambient operating temperature

-40°C ≤ Tamb ≤ +60°C(T5)

-40°C ≤ Tamb ≤ +50°C(T6)

Explosion protection rating

IECEX - Ex db IIC T6/T5 Gb, Ex tb IIIC T85°C/T100°C Db

ATEX - Ex II 2G Ex db IIC T6/T5 Gb,

Ex II 2D Ex tb IIIC T85°C/T100°C Db

NEPSI, CCC - Ex db IIC T5/T6 Gb

KCs - Ex d IIC T6/T5, IP66

Certificates IECEX, ATEX, NEPSI, KCs, CCC

Housing standard color Red, MUNSELL No. 7.5BG 7/2

Cable entry 1/2" NPT

Flashing rate(LF type) 60-80 flashes/min.

Strobe rate(LS type) 70-80 flashes/min.

Simulated revolving rate(LR type) 120-140RPM

- Explosion proof, multifunctional, and compact LED signal light designed for use in explosive gas environments with Ex d C rating
- Features excellent shock and vibration resistance, maintenance significantly reduced with long-lasting LED light source
- Features superior durability with aluminum housing(QNE)
- STS housing provides superior durability and corrosion resistance(QNE-SUS)
- Fully enclosed structure with protection rating of IP66

QNE Explosion Proof Signal Beacon

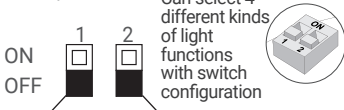
Model number	Voltage	Current	Certificates	Weight	Color
QNE	DC12V-24V	Max.350mA	IECEX, ATEX, NEPSI, KCs	2.05kg	● R-Red ● A-Amber ● G-Green ● B-Blue
	AC110V-230V	Max.110mA	CCC		

QNE-SUS Explosion Proof Signal Beacon with STS Housing

Model number	Voltage	Current	Certificates	Weight	Color
QNE-SUS	DC12V-24V	Max.350mA	IECEX, ATEX, NEPSI, KCs	4.65kg	● R-Red ● A-Amber ● G-Green ● B-Blue
	AC110V-230V	Max.110mA	CCC		

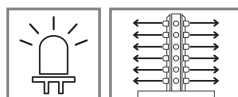
Instruction for Light Function Switch

ON=1/OFF=0

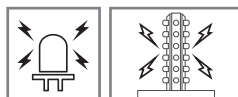


No.	1	2	Operation
0	0	0	LED Steady
1	0	1	LED Flashing
2	1	0	LED Strobe
3	1	1	LED Simulated revolving flashing

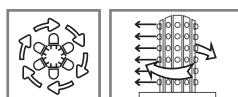
Operation



- **LED Steady/Flashing**
Repeat operation of LED light on/off



- **LED Strobe**
Short LED steady/flashing. Creates a xenon flashing effect by providing maximum electric current



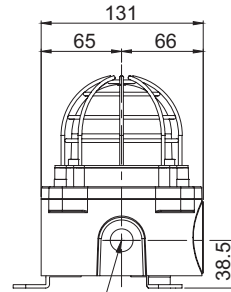
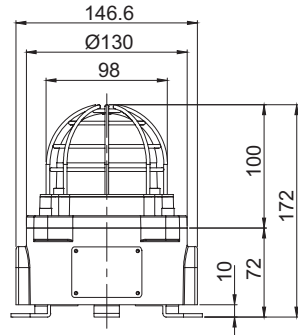
- **LED Simulated Revolving Flashing**
LED flashes steadily around the cylindrical LED filaments which makes a simulated revolving effect



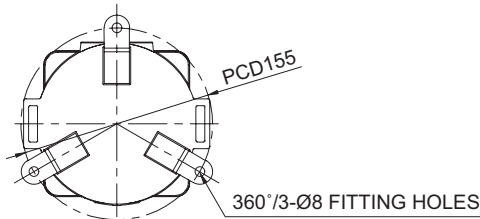
Technical Diagram

Units: mm

·QNE / QNE-SUS



CABLE ENTRY NPT 1/2"



Customization

- Explosion proof cable gland attached type available (Standard type does not come with explosion proof cable gland)
- 2 ways cable entries
- M20×1.5, 3/4" NPT cable entry

Ordering Specification

QNE	-	110/230	-	R	-	SUS	-	IECEX
[Model number]		[Voltage]		[Color]		[Housing materials]		[Certificates]
QNE		12/24-DC12V-24V 110/230-AC110V-230V		● R-Red ● A-Amber ● G-Green ● B-Blue		None- Al SUS-ST316L		IECEX ATEX KCs CCC(NEPSI)