

Ø80mm Ethernet LED Tower Lights

ST80(M)EL-ETN



Remote control through internet or local area network

ST80(M)EL-ETN Ø80mm Ethernet LED Tower Lights

Model number	Layers	Voltage	Certificates	Color
ST80EL-ETN ST80MEL-ETN	1	DC12V DC24V AC110V-220V	-	● R-Red
	2	DC12V DC24V AC110V-220V		● R-Red ● G-Green
	3	DC12V DC24V AC110V-220V		● R-Red ● A-Amber ● G-Green
	4	DC12V DC24V AC110V-220V		● R-Red ● A-Amber ● G-Green ● B-Blue
	5	DC12V DC24V AC110V-220V		● R-Red ● A-Amber ● G-Green ● B-Blue ○ W-White



ST80(M)EL-ETN Series

Light source/signal sound current(based on 1 layer)

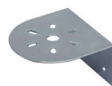
Voltage	DC12V	DC24V	AC110V-220V
Light source current(1 layer)	0.260A	0.180A	Max.0.070A
Signal sound current	0.350A	0.230A	Max.0.085A

Wiring Instructions

- Apply properly rated voltage through the POWER CABLE
- Connect the RJ45 connector of the UTP cable into the PC's Ethernet port or router
- External power line UL1015 AWG18(0.75sq) x 2C 400mm
- Power plug will be provided in case of AC type
- UTP cable: Category 5 cable
- DC type : Black output line is negative(-).

Customization

- Customized color arrangements available
- 70mm lens height(Standard 40mm)
(Model number: ST80(M)L-ETN)
- Customized pole length available
- Wall mount bracket



Wall mount bracket
TWS80



Wall mount bracket
TWA80

Ordering Specifications

ST80EL-ETN-WS	3	24	RAG	QZ24
[Model number]	[Layers]	[Voltage]	[Color]	[Bracket]
ST80EL-ETN-BZ	1-1 Layers	12-DC12V	● R-Red	None-Standard Bracket -LB24 -LW24 -QZ24 -SZ24 -QL24 -SL24
ST80EL-ETN-WS	2-2 Layers	24-DC24V	● A-Amber	
ST80EL-ETN-WM	3-3 Layers	110/220-AC110V-220V	● G-Green	
ST80EL-ETN-WA	4-4 Layers		● B-Blue	
ST80MEL-ETN-BZ	5-5 Layers		○ W-White	
ST80MEL-ETN-WS				
ST80MEL-ETN-WM				
ST80MEL-ETN-WA				

Mounting bracket

Standard	LB24	LW24	QZ24
Steel	Steel	ABS	ABS
SZ24	QL24	SL24	
Al	ABS	Al	

※ Please refer to [Tower Light Mounting Bracket] on this catalogue for detailed dimensions

Mount brackets are available for the pole mount type(ST80EL-ETN series) only.

ST-ETN Series



Technical Diagram

Units : mm

