

SED / SD / SMD Series

Wall mount Signal Beacon and Electronic Sounder combinations featuring superior durability, tight seal, and corrosion resistance, designed for vessels and heavy industrial applications



PRODUCT SPECIFICATION

SED | SD | SMD

Materials Lens-PC, Housing-Al, Protection cage-STS316L, Reflector-PC, Reflector-Heat resistant ABS

Cable entry 1/2" PF

Protection rating IP66

Housing standard color MUNSELL No. 7.5BG 7/2

- Wall mount Signal Beacon and Electronic Sounder combinations for vessels and heavy industrial applications
- Aluminum housing and polycarbonate lens material provides excellent impact and shock resistance
- Excellent hermetic structure that block water and dust
- Can select a variety of light source(bulb, LED, xenon lamp) and sound pattern combination
- Attached terminal box enables easy wiring
- Can adjust sound volume and select sound pattern with the switches built inside the products

- **SED Series** Ø125mm signal beacon & electronic sounder with Max.114dB sound output
- **SD Series** Ø150mm signal beacon & electronic sounder with Max.114dB sound output
- **SMD Series** Ø150mm signal beacon & electronic sounder with Max.120dB sound output

1 Lens

- Utilizes a strong and durable polycarbonate material with excellent shock and vibration resistance.



Light transmission type

LED revolving type(SEDLR)
LED revolving type(SED)



Light diffusion type

LED steady/flashing type(SEDL)
Xenon lamp strobe type(SEDs)

2 Protection cage

- The durable protection cage is made of corrosion resistant stainless steel that prevents damage to the lens from external contact
- Materials: STS316L

3 A variety of selectable warning sounds and sound messages

You can convey specific information with a variety of 20 warning sounds and voice messages.

| Sound | Built-in sound | Ch | Sound tone |
|-------|--------------------------|----------|-------------------------|
| WS | 5 Warning sounds | Ch1 | Fire.A-ANG |
| | | Ch2 | Emergency WA-U(Yelp) |
| | | Ch3 | Ambulance PI-PO(Hi-low) |
| | | Ch4 | Machinery Fault |
| | | Ch5 | High Expansion |
| WP | 5 Special warning sounds | Ch1 | Fire.A-ANG |
| | | Ch2 | Abandon Alarm |
| | | Ch3 | Machinery Fault |
| | | Ch4 | High Expansion |
| | | Ch5 | 7 Short Pl. / 1 Long |
| WM | 5 Melodies | Ch1 | Sweet Home |
| | | Ch2 | For Elise |
| | | Ch3 | Cuckoo's Waltz |
| | | Ch4 | Piano Sonata |
| | | Ch5 | Turkish March |
| WA | 5 Alarms | Ch1 | Beep Intermittent |
| | | Ch2 | Door Chime |
| | | Ch3 | Phone Ring |
| | | Ch4 | Pl.PI.PI Short |
| | | Ch5 | Tripping Beat |
| WV | 5 Customizable voices | Ch1- Ch5 | Customized sound tones |

4 Housing

- The special aluminum housing features superior durability
- The housing is corrosion resistant from a special anodized surface treatment process
- Materials: Al

5 Terminal Box

- Terminal box is located at the bottom of the product for easy wiring
- Materials: Al

A Variety of Selectable Light Source and Function Combinations

You can select from a variety of light sources for your work environment, condition, and purpose. Basic specifications are as follows.

- LED revolving type
- LED steady/flashing type
- Xenon lamp strobe type
- Bulb revolving type

Customization

- LED Strobe type
- LED revolving type

SED / SD / SMD Series

SED / SD / SMD Series Product Categories



Standard type

- No protection cage is provided
- Recommended for the places where the lens is not damaged by external contact
- SED / SD / SMD Series



Protection cage type

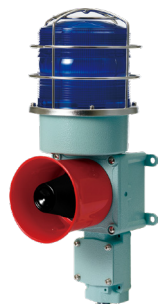
- Provided with protection cage
- Lens can be protected from the damage by external contact
- SEDP / SDP / SMDP Series

SED / SD / SMD Series References

| SED Series | | SD Series | | SMD Series | | |
|-------------------|---|--------------------------|-------------------------|--------------------------|-------------------------|--------------------------|
| Diameter/dB | Ø125mm, Max.114dB at 1m | | Ø150mm, Max.114dB at 1m | | Ø150mm, Max.120dB at 1m | |
| Materials | Lens-PC, Housing-AL, Protection cage-ST316L, Reflector-PC, Reflector-Heat resistant ABS | | | | | |
| Protection rating | IP66 | | | | | |
| Certificates | CCS, CE | | CE | | - | |
| Cable entry | Standard : 1/2"PF (Customized cable entry available : 3/4"PF) | | | | | |
| Mounting | Wall mount | | | | | |
| | Standard type | Built-in protection cage | Standard type | Built-in protection cage | Standard type | Built-in protection cage |

LED revolving

Bulb revolving

SEDLR
SEDSEDLRP
SEDPSDLR
SDSDLRP
SDPSMDLR
SMDSMDLRP
SMDPLED
steady/flashingXenon lamp
strobeSEDL
SEDSSEDLP
SEDSPSDL
SDSSDLP
SDSPSMDL
SMDSSMDLP
SMDSP

Signal Beacon and Electronic Sounders for Vessels and Heavy Industry Applications

SED Series



Ø125mm signal beacon and Max.114dB electronic sounder combination



SEDLR / SEDLRP LED Revolving Signal Beacon & Electronic Sounder Combination

| Model number | Voltage | Current | Sound pattern and volume | Certificates | Weight | Color |
|-----------------|---------|---------|---|--------------|-----------|-----------|
| SEDLR SEDLRP | DC12V | 1.7A | ·WS-5 Warning sounds: Max.114dB | | ·SEDLR | |
| | DC24V | 1.3A | ·WP-5 Special warning sounds : Max.114dB | | DC-3.09kg | ● R-Red |
| | AC110V | 330mA | ·WM-5 Melodies: Max.110dB | | AC-3.86kg | ● A-Amber |
| | AC220V | 180mA | ·WA-5 Alarms: Max.114dB ·WV-5 Customizable voices: 108-113dB | | ·SEDLRP | ● G-Green |
| | | | | | DC-3.34kg | ● B-Blue |
| | | | | | AC-4.11kg | |

- Revolving speed: 120-140RPM, Ø125mm
- Ambient operating temperature: -20°C to +50°C



SEDL / SEDLP LED Steady/Flashing Signal Beacon and Electronic Sounder Combination

| Model number | Voltage | Current | Sound pattern and volume | Certificates | Weight | Color |
|---------------|---------|---------|---|--------------|-----------|-----------|
| SEDL SEDLP | DC12V | 2A | ·WS-5 Warning sounds: Max.114dB | | ·SEDL | |
| | DC24V | 1.5A | ·WP-5 Special warning sounds : Max.114dB | | DC-2.96kg | ● R-Red |
| | AC110V | 370mA | ·WM-5 Melodies: Max.110dB | | AC-3.38kg | ● A-Amber |
| | AC220V | 200mA | ·WA-5 Alarms: Max.114dB ·WV-5 Customizable voices: 108-113dB | | ·SEDLP | ● G-Green |
| | | | | | DC-3.21kg | ● B-Blue |
| | | | | | AC-3.63kg | |

- Flashing rate: 60-80 flashes/min(Built-in steady/flashing selection switch), Ø125mm
- Ambient operating temperature: -30°C to +50°C



SEDS / SEDSP Xenon Strobe Signal Beacon and Electronic Sounder Combination

| Model number | Voltage | Current | Xenon lamp | | | Sound pattern and volume | Certificates | Weight | Color |
|---------------|---------|---------|------------|----------|----------|--|--------------|--------|-------|
| | | | Spec | Standard | Parts no | | | | |
| SEDS SEDSP | DC12V | 2.5A | | | | ·WS-5 Warning sounds : Max.114dB | | | |
| | DC24V | 1.4A | 200V | EUB0641 | 48 | ·WP-5 Special warning sounds: Max.114dB | | | |
| | AC110V | 360mA | -550V | -1A(G) | | ·WM-5 Melodies : Max.110dB | | | |
| | AC220V | 220mA | | U type | | ·WA-5 Alarms : Max.114dB ·WV-5 Customizable voices: 108-113dB | | | |

- Convenient lamp exchange by adopting a connector type lamp installation
- Flashing rate: 60-80 flashes/min, Ø125mm
- Ambient operating temperature: -30°C to +50°C



SED / SEDP Bulb Revolving Signal Beacon and Electronic Sounder Combination

| Model number | Voltage | Current | Bulb | | | Sound pattern and volume | Certificates | Weight | Color |
|--------------|---------|---------|--------|----------|----------|--|--------------|--------|-------|
| | | | Spec | Standard | Parts no | | | | |
| SED SEDP | DC12V | 3A | 12V15W | G23 15S | 17 | ·WS-5 Warning sounds : Max.114dB | | | |
| | DC24V | 2A | 24V15W | G23 15S | 18 | ·WP-5 Special warning sounds: Max.114dB | | | |
| | AC110V | 450mA | | | | ·WM-5 Melodies : Max.110dB | | | |
| | AC220V | 230mA | | | | ·WA-5 Alarms : Max.114dB ·WV-5 Customizable voices: 108-113dB | | | |

- Revolving speed: 120-140RPM, Ø125mm
- Ambient operating temperature: -20°C to +50°C

※ CE compliant : DC24V

※ Max.built-in volume feature is based on WS, WP-Ch23 / WM-Ch5 / WA-Ch5

※ In case of customized WV 5 tone type, there may be difference of volume depending on user's audio file type.



SEDLR



SEDLP / SEDSP



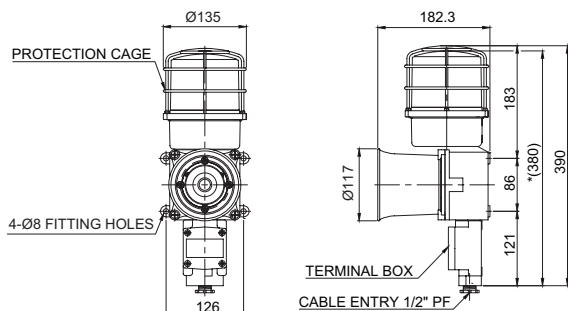
SED

SED / SD / SMD Series

Technical Diagram

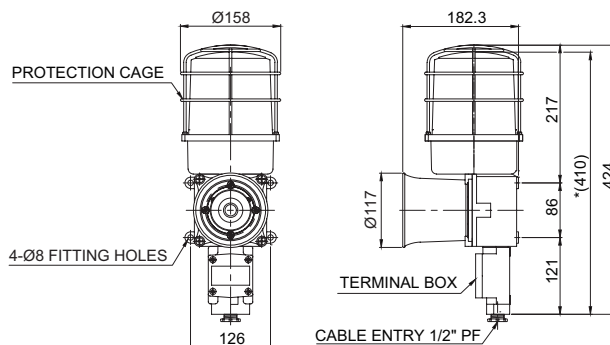
Units: mm

·SEDLRP / SEDLP / SEDSP / SEDP



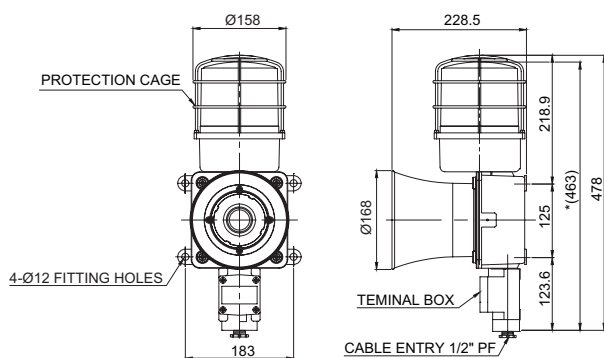
※ *(380) represents SED Series size without protection cage.

·SDLRP / SDLP / SDSP / SDP



※ *(410) represents SD Series size without protection cage.

·SMDLRP / SMDLP / SMDSP / SMDP



※ *(463) represents SMD Series size without protection cage.

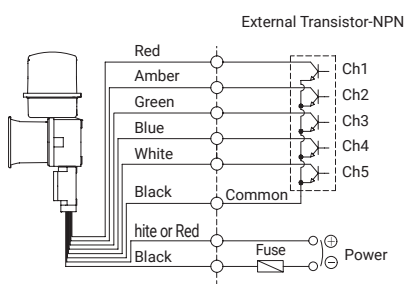
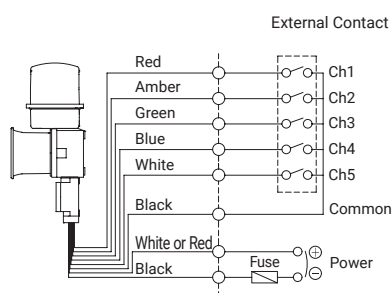
Customization

- Cable gland type
- Customized cable entry(3/4"PF) available(Standard : 1/2"PF)
- Customized external sound line type available : SED/SD/SMD Series have built-in switch for sound tone selection
- Customized wiring in case of external contact or transistor wiring type as sound tone selector (Model number : -LC)
- Brass housing : Brass housing for SD/ SMD Series are optionally provided which has excellent anti-corrosive properties
- ※ Color will be MUNSELL No. 7.5BG 7/2 when released.

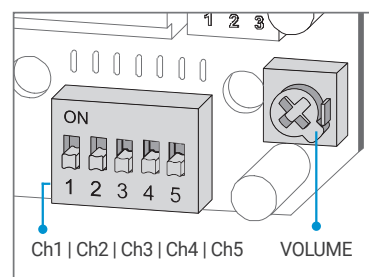
Sound Selection Instructions and Wiring

·SED / SD / SMD Series-DC/AC

- Customization: External contact(LC)



- Standard Type: Select sound using the switch inside of the unit. When you turn on the dip switch for each channel, the designated sound will be played.



Wiring Instructions

- SED, SEDLR, SD, SDLR, SMD, SMDLR - Black output line is negative(-).

Ordering Specification

| SEDLR | WA | 24 | R |
|--|------------------------|--|---|
| [Model number] | [Sound] | [Voltage] | [Color] |
| SEDLR / SEDLRP / SEDL / SEDLP SEDS / SEDSP / SED / SEDP SDLR / SDLRP / SDL / SDLP SDS / SDSP / SD / SDP SMDLR / SMDLRP / SMDL / SMDLP SMDS / SMDSP / SMD / SMDP | WS-ningds Wpeci war | 12-DC12V 24-DC24V 110-AC110V 220-AC220V | ● R-Red ● A-Amber ● G-Green ● B-Blue |