

## SE Series

The brass housing product with excellent corrosion resistance



SEL

### PRODUCT SPECIFICATION

SEL | SE-S | SE

**Materials** Lens-Tempered glass, Filter-PC, Housing-Brass, Protection cage-ST316L, Reflector-PC, Reflector-Heat resistant ABS

**Ambient operating temperature**

-40°C ≤ Tamb ≤ +60°C

**Explosion protection rating** Ex d IIC T6, IP66

**Certificates** KIMM

**Cable entry** 1/2" NPT

- Brass housing explosion proof signal beacon with excellent corrosion resistant
- A variety of light source selections from bulb, LED, and xenon lamp
- Fully enclosed structure with protection rating of IP66
- Integrated housing and terminal box model

### SEL LED Steady/Flashing Signal Beacon

Model number	Voltage	Current	Certificates	Weight	Color
SEL	DC12V-24V	Max.0.190A	KIMM	13.29kg	● R-Red
	AC110V	0.050A		14.26kg	● A-Amber
	AC220V	0.025A		14.26kg	● G-Green ● B-Blue

- Long-lasting high intensity LED light source
- Suitable for applications where bulb replacement is hard
- Built-in steady/flashing selection switch
- Flashing rate: 60-80 flashes/min

### SE-S Xenon Lamp Strobe Signal Beacon

Model number	Voltage	Current	Xenon lamp			Certificates	Weight	Color
			Spec	Standard	Parts no			
SE-S	DC12V-24V	Max.0.435A		BGA2120	47	KIMM	13.53kg	● R-Red
	AC110V	0.075A	200V -350V	-BBC			13.51kg	● A-Amber
	AC220V	0.075A		I type			13.51kg	● G-Green ● B-Blue

- Lamp connector fastening structure allows for convenient lamp replacement
- Excellent long-distance visibility with strong strobe signal diffusion
- Flashing rate: 60-80 flashes/min

### SE Bulb Revolving Warning Beacon

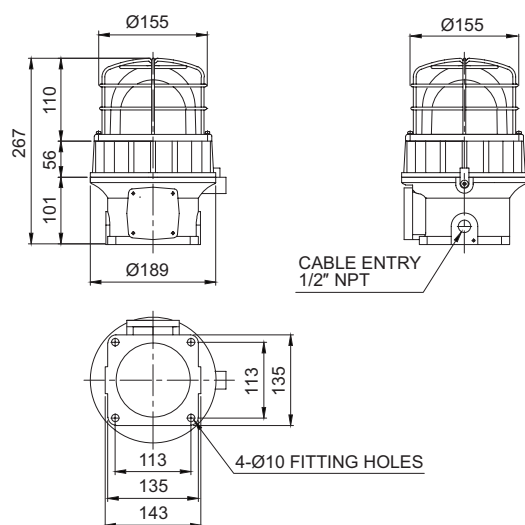
Model number	Voltage	Current	Bulb			Certificates	Weight	Color
			Spec	Standard	Parts no			
SE	DC12V	1.000A	12V10W	T16x35 15S	9	KIMM	13.35kg	● R-Red
	DC24V	1.250A	24V10W	T16x35 15S	10		13.35kg	● A-Amber
	AC110V	0.130A	12V10W	T16x35 15S	9		13.91kg	● G-Green
	AC220V	0.065A	12V10W	T16x35 15S	9		13.91kg	● B-Blue

- Excellent signal light diffusion effect with multi-faced reflector
- Revolving speed: 120-140RPM

## Technical Diagram

Units: mm

·SEL / SE-S / SE



SE-S



SE

## Customization

- Explosion proof cable gland attached type available (Standard type does not provide explosion proof cable gland)
- 2 ways cable entries
- Cable entry 3/4" NPT, M20 x 1.5

## Ordering Specification

SE	-	220	-	R
[Model number]		[Voltage]		[Color]
SELR		12-DC12V		● R-Red
SEL		24-DC24V		● A-Amber
SE-S		12/24-DC12V-24V(SEL, SE-S only)		● G-Green
SE		110-AC110V		● B-Blue
		220-AC220V		