


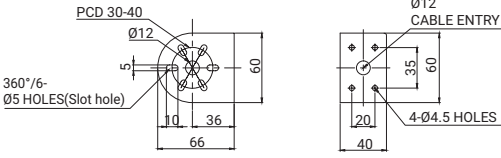
# Warning/Signal Light Mounting Brackets


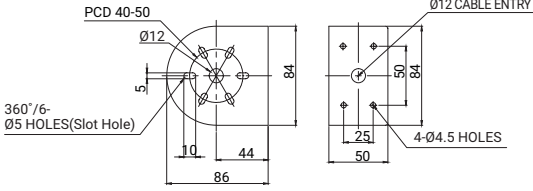
User can select from a variety of bracket options depending on their application conditions.

Units: mm

## • TWS45 | TWS80

Bracket options for direct mount warning/signal light installation.  
Material: Steel  
Color: Silver, Ivory


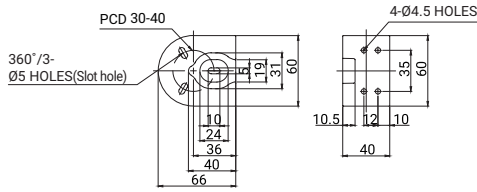

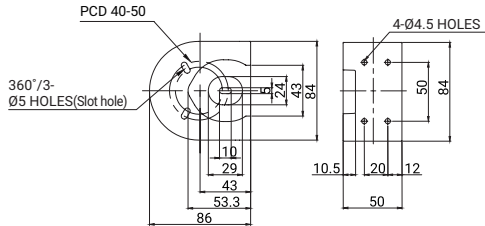
Product Image	Technical Diagram for Applicable Models
	
TWS45	S50 Series, S60 Series, MFL60, QMCL60, Q60L

	
TWS80	S80 Series, S80SOL, MFL80, SMCL80, QMCL80, Q80L

## • TWA45 | TWA80

Bracket options for direct mount warning/signal light installation.  
Bracket structure allows for contained and tidy wiring with no exposed wires.

Material: PC  
Color: Black, Ivory

Product Image	Technical Diagram for Applicable Models
	
TWA45	S50 Series, S60 Series, MFL60, QMCL60, Q60L
	
TWA80	S80 Series, S80SOL, MFL80, SMCL80, QMCL80, Q80L

# Warning/Signal Light Mounting Brackets

Units: mm

## • SWP125

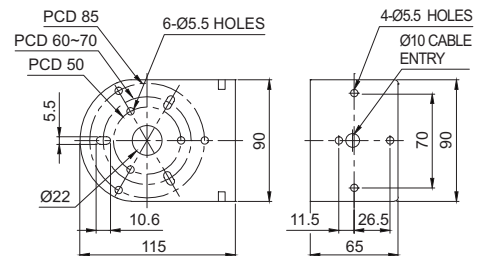
Bracket options for direct mount warning/signal light installation.

Material: Steel  
Color: Silver, Ivory



Product Image

Technical Diagram for Applicable Models



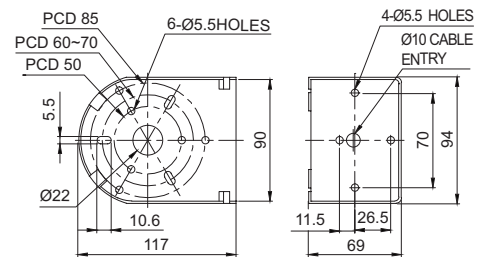
SWP125

S100 Series, S125 Series, STD Series, STND Series,  
STND100 / STND125 Series, QMCL100 / QMCL125, Q100L, Q125L

## • SWM125

Bracket options for direct mount warning/signal light installation. Bracket structure allows for contained and tidy wiring with no exposed wires.

Material: PC  
Color: Ivory



SWM125

S100 Series, S125 Series, STD Series, STND Series,  
STND100 / STND125 Series, QMCL100 / QMCL125, Q100L, Q125L

※ For detailed specifications of the pole type mounting bracket for the Q Series, SJ Series, SR Series, S80 Series, and MFL Series, please visit our website. Please refer to the [Tower Light Mounting Bracket] in this catalog.