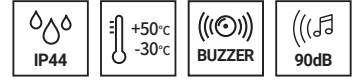


# S150 Series



S150UL / S150US



S150UL-FT / S150US-FT

## PRODUCT SPECIFICATION

S150UL | S150US  
S150UL-FT | S150US-FT

**Materials** Lens-PC, Housing-ABS, Reflector-Heat resistant ABS, Mounting bracket-STS316L  
**Ambient operating temperature** -30°C to +50°C  
**Volume** Max.90dB at 1m  
**Protection rating** IP44  
**Flashing rate** 60-80/min

- Can select between standard and built-in buzzer type depending on installation environment
- Mounting bracket allows convenient installation in case of XXX-FT type

### LED Steady/Flashing Signal Light

Model number	Voltage	Current	Certificates	Weight	Color
S150UL S150UL-FT	DC12V-24V	Max.300mA	-	0.52kg	● R-Red
	AC110V	70mA		0.92kg	● A-Amber
	AC220V	35mA		0.92kg	● G-Green ● B-Blue

· Built-in switch for selection between steady and flashing mode

### Xenon Lamp Strobe Signal Lights

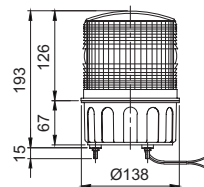
Model number	Voltage	Current	Xenon lamp			Certificates	Weight	Color
			Spec	Standard	Parts no			
S150US S150US-FT	DC12V	Max. 1.3A	200V -550V	EUB0641 -1A(G) U Type	48	-	0.56kg	● R-Red
	-24V						0.54kg	● A-Amber
	AC110V	260mA					0.54kg	● G-Green
	AC220V	270mA					0.54kg	● B-Blue

· Connector type lamp socket allows convenient lamp replacement

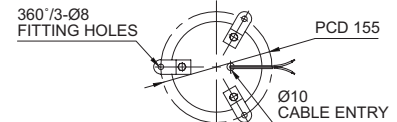
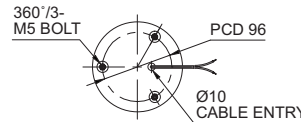
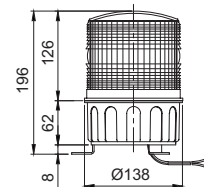
### Technical Diagram

Units: mm

-S150UL / S150US



-S150UL-FT / S150US-FT



### Hyper illuminance xenon lamp

- S150US/S150US-FT can be optionally equipped with a hyper illuminance xenon lamp bulb BH0647(G) upon the customer's request.(model number : S150UHS/S150UHS-FT)
- Dimension, mounting hole and other functions are identical with normal type.

### Wiring Instructions

- External Power line - UL1015 AWG18(0.75sq)×2C 400mm
- Product can be wired regardless of polarity

### Customization

- 2 buzzer sound types: Both prolonged (beep, beep) and staccato (beep, beep) buzzer output available.
- Hyper illuminance xenon lamp type(model number: S150UHS / S150UHS-FT)

### Ordering Specification

S150UL	-	BZ	-	220	-	R
[Model number]		[Buzzer option]		[Voltage]		[Color]
S150UL		(None)		12/24-DC12V-24V		● R-Red
S150UL-FT		- No buzzer		110-AC110V		● A-Amber
S150US		BZ		220-AC220V		● G-Green
S150US-FT		- Built-in buzzer				● B-Blue