

# Explosion Proof Electronic Sounder(Telephone Initiated)

## SPNA-TI



### PRODUCT SPECIFICATION

SPNA-TI

**Materials** Housing-Al, Horn housing-STS316L

**Ambient operating temperature**

-40°C ≤ Tamb ≤ +60°C

**Sound volume** Max.118dB at 1m(Volume adjustable)

**Protection rating**

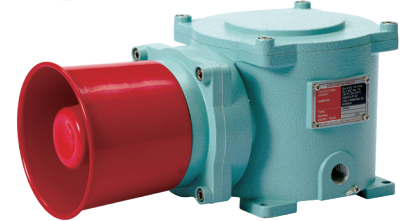
IECEX - Ex d II C T6 Gb, IP66

ATEX - EX II 2G Ex d II C T6 Gb, IP66

**Certificates** IECEX, ATEX

**Housing standard color** MUNSSELL No. 7.5BG 7/2

**Cable entry** 1/2" NPT



SPNA-TI

- Explosion proof alarm horn sounder
- Telephone Initiated signal sounder triggers built-in alarm sound that is activated by 25Hz telephone ring signal
- Highly noticeable telephone alarm in noisy environment
- Telephone line(2 LINE) is connected to PSTN telephone line
- Various sound tones can be selected : warning sound, alarm, melody
- Aluminum housing provides excellent durability
- Installation of terminal block for power connection inside the housing
- Rated power when telephone lines are not in use: 45VDC - 55VDC
- Rated power when telephone rings : 95VDC - 130VDC

### SPNA-TI Explosion Proof Electronic Sounder, Max.113dB

Model number	Voltage	Current	Sound pattern and volume	Certificates	Weight
SPNA-TI	DC24V	0.830A	·WS-5 Warning sounds: Max.118dB ·WP-5 Special warning sounds : Max.118dB		6.09kg
	AC120V	0.190A	·WM-5 Melodies: Max.118dB ·WA-5 Alarms: Max.116dB		6.44kg
	AC230V	0.110A	·WV-5 Customizable voices: 110-115dB		6.44kg

※ Please refer to [Sound tone and combination for standard product] on this catalogue for detailed sound tone specification

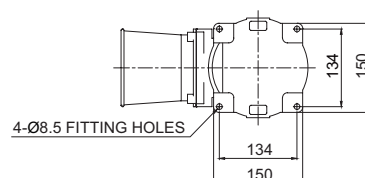
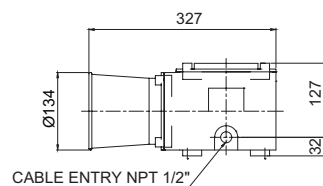
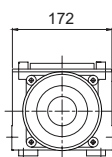
※ Max.built-in volume feature is based on WS, WP-Ch1 / WM-Ch5 / WA-Ch5.

※ In case of customized WV 5 tone type, there may be difference of volume depending on user's audio file type.

### Technical Diagram

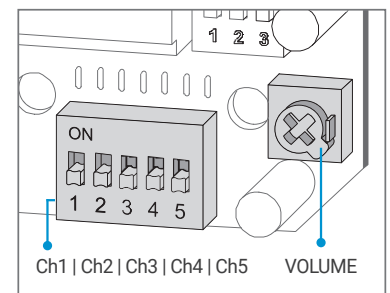
Units: mm

·SPNA-TI



### Sound Selection Instructions and Wiring

- Standard Type: Select sound using the switch inside of the unit. When you turn on the dip switch for each channel, the designated sound will be played.



- Customization : External contact(LC)  
In case of select sound between external contact and transistors, sound line is threading as customization when product released(LC).

### Ordering Specification

SPNA	-	WM	-	230	-	LC	-	TI
[Model number]   SPNA		[Sound]   WS-Warning sounds WP-Special warning sounds WM-Melodies WA-Alarms WV-Customizable voices		[Voltage]   24-DC24V 120-AC120V 230-AC220V		[sound selection]   None-Standard type LC Type-Uses external contact		[Telephone Initiated]   TI-Telephone Initiated

### Customization

- Explosion proof cable gland attached type available (Standard type does not come with explosion proof cable gland)
- 2 ways cable entries
- Customized cable entry (3/4" NPT, M20×1.5, M25×1.5) available