

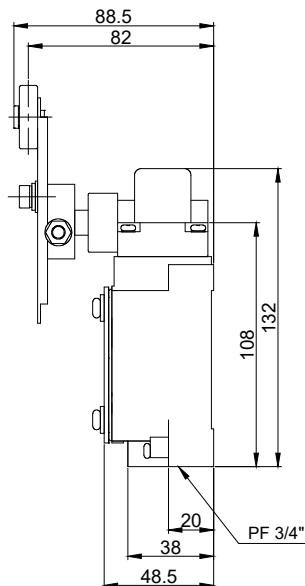
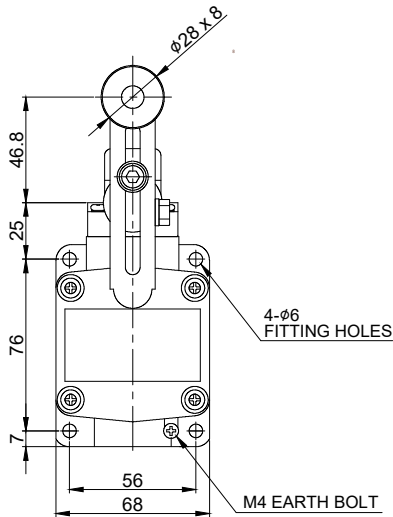
1 2 3 4 5 6

A

B

C

D



MARK	DATE	REVISION	REVISER	APP. BY
1				
2				
3				

MODEL NO	SW2M-AL
MATERIAL	HEAD & BODY - CASTING BRASS BOLT, NUT & ETC.-SUS304
CONTACT	2CKT-DB, 1A1B, 250VAC 6A
PROTECTION GRADE	WATER & DUST PROOF-IP67
CABLE ENTRY	PF3/4
COLOR	MAKER STANDARD
INSULATION RESISTANCE	100MQ MIN. AT 500V DC

ISO2768-1 : CLASS OF TOLERANCE					SURFACE FINISH
	f	m	(C)	v	
FOR LINEAR DIMENSIONS	0.5-3	±0.05	±0.1	±0.2	-
	3-6	±0.05	±0.1	±0.3	±0.5
	6-30	±0.1	±0.2	±0.5	±1
	30-120	±0.15	±0.3	±0.8	±1.5
	120-400	±0.2	±0.5	±1.2	±2.5
FOR ANGULAR DIMENSIONS	400-1000	±0.3	±0.8	±2	±4
	0-10	±1°	±1°30'	±3°	
	10-50	±0°30'	±1°	±2°	
	50-120	±0°20'	±0°30'	±1°	
	120-400	±0°10'	±0°13'	±0°30'	

Nr.	DWG. NO.	TITLE/ NAME	MAT'L	QTY	REFERENCE
DSND BY	CHKD BY	CHKD BY	APRV BY	VIEW	DATE
J.H.PARK	J.H.PARK	J.K.HAN	3	2020.11.20	
TITLE			MODEL		
SW2MS-AL			SW2MS-AL		
OUTLINE DRWAING			DWG. NO.		
Qlight			SW2MS-AL-OUT		
SCALE	SIZE	REV	SHEET		
N/S	A4	00	1/1		

1 2 3 4 5 6

A4(297X210)