

(1) **EU - Type Examination Certificate**

(2) Equipment and protective systems intended for use in potentially explosive atmospheres – **Directive 2014/34/EU**

(3) EU - Type Examination Certificate Number

EPS 18 ATEX 1 018 X

Revision 4

(4) Equipment: Tower LED light type QTEXB and QTEX

(5) Manufacturer: Qlight Co., Ltd.

(6) Address: 185-25, Mukbang-Ro, Sangdong-Myeon, Gimhae-Si,
Gyeongsangnam-Do
Korea

(7) This equipment and any acceptable variation thereto are specified in the annex to this certificate and the documentation therein referred to.

(8) Bureau Veritas Consumer Products Services Germany GmbH, notified body No. 2004 in accordance with Article 21 given in the Directive 2014/34/EU of the European Parliament and of the Council of 26 February 2014, certifies that this equipment has been found to comply with the essential health and safety requirements relating to the design and construction of equipment and protective systems intended for use in potentially explosive atmospheres, given in Annex II of the Directive. The examination and test results are recorded in the confidential documentation under the reference number 17TH0259.

(9) Compliance with the essential health and safety requirements has been assured by compliance with:

EN IEC 60079-0:2018

EN 60079-1:2014

EN 60079-31:2014

(10) If the sign "X" is placed after the certificate number, it indicates that the equipment is subject to special conditions for safe use specified in the annex to this certificate.

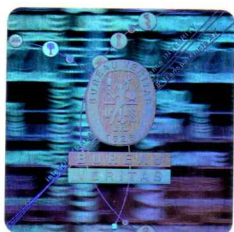
(11) This EU - Type Examination Certificate relates only to the design and examination of the specified equipment in accordance with Directive 2014/34/EU. Further requirements of this Directive apply to the manufacture of this equipment and its placing on the market. Those requirements are not covered by this certificate.

(12) The marking of the equipment shall include the following:



II2G Ex db IIC T6 Gb

II2D Ex tb IIIC T85°C Db



Certification department of explosion protection

Hamburg, 2022-03-22



(13)

Annex

(14) **EU - Type Examination Certificate EPS 18 ATEX 1 018 X**

Revision 4

(15) Description of equipment:

The QTEX series is a signal tower light for use in hazardous gas and dust atmospheres EPL Gb and Db. The enclosure is designed flameproof glass tube and aluminum enclosure. QTEXB version has additional siren speaker. Connection is made by direct cable gland entry.

Electrical data:

| Model number | Max. Power | Voltage | Current |
|--------------|-----------------------------|-------------------------------------|---------------------------------|
| QTEXB | 14.25W(95V) 20.24W(230V) | AC/DC12V AC/DC24V AC95 ~ 230V | 0.430A 0.259A MAX. 0.135A |
| QTEX | 11.9W(95V) 17.02W(230V) | AC/DC12V AC/DC24V AC95 ~ 230V | 0.330A 0.189A MAX. 0.113A |

Additional manufacturing location:

QLIGHT ELECTRONICS (QIDONG) CO., LTD
No. 33 Haiyan Road, Qidong High-Tech Industrial Development Zone
Qidong City, Nantong City, Jiangsu Province 226200 China

(16) Reference number: 17TH0259

(17) Special conditions for safe use:

The glass must be protected from high impact energy hazards.

Ambient temperature range: -40 °C to +60 °C.

Special conditions for manufacturing:

The enclosure shall be subjected to routine overpressure test according to EN 60079-1, 15.2.3 with 23.5 bar.

(18) Essential health and safety requirements:

Met by compliance with standards.

Certification department of explosion protection

Hamburg, 2022-03-22



U. Feike