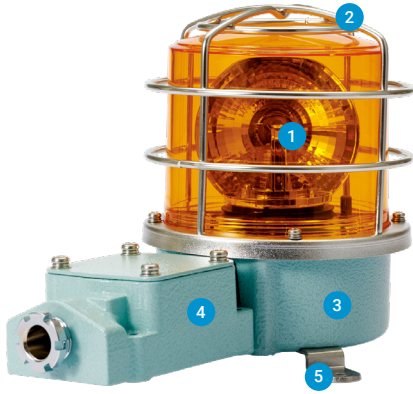


## SH1 / SH2 Series

Superior durability with fully enclosed structure and corrosion resistance, suitable for vessels and heavy industry applications



### PRODUCT SPECIFICATION

SH1 Series | SH2 Series

**Materials** Lens-PC, Housing-Al, STS316L(SH1-SUS)

Protection cage-ST316L, Reflector-PC, Reflector for bulb type-Heat resistant ABS, Bracket-ST316L

**Protection rating** IP66

**Housing standard color** MUNSSELL No. 7.5BG 7/2

**Cable entry** 1/2" PF

- Aluminum housing and polycarbonate lens material provides excellent impact resistance under seismic conditions
- STS housing provides superior durability and corrosion resistance(SH1-SUS)
- Excellent hermetic structure that blocks water and dust
- Can select a variety of light sources (Bulb, LED, and xenon) for your application needs and environmental conditions
- Terminals located inside the terminal box or product

#### 1 Lenses

- Utilizes a strong and durable polycarbonate material with excellent shock and vibration resistance
- The lens surface has two types depending on the light source function-Light diffusion type and light transmission type



Light transmission type

LED revolving type  
Bulb revolving type  
SH( )LR | SH( )



Light diffusion type

LED steady/flashing type  
xenon lamp strobe type  
SH( )L | SH( )S

#### 2 Protection cage

- The durable protection cage is made of corrosion resistant stainless steel that prevents damage to the lens from external contact
- Materials: STS316L

#### 3 Housing

- The special aluminum body housing features superior durability
- STS housing provides superior durability and corrosion resistance(SH1-SUS)
- The housing is corrosion resistant from a special anodized surface treatment process
- Materials: Al, STS316L(SH1-SUS)

#### 4 Terminal box

- Terminal box is located on the side of housing for easy wiring
- Materials: Al

#### 5 Brackets

- Stainless steel mounting bracket is conveniently attached to the outer surface of the product
- Materials: STS316L

### A Variety of Selectable Light Source and Function Combinations

You can select from a variety of light sources for your work environment, condition, and purpose. Basic specifications are as follows.

- LED revolving type
- LED steady/flashing type
- Xenon lamp strobe type
- Bulb revolving type

### Customization

- LED Strobe type
- LED revolving type

### Product Categories



Standard type

- Protection cage or terminal box not attached
- Terminals located inside the housing
- Use in environments that has low probability of damage to the lens due to external forces
- SH1/SH2 Series is available in this model



Built-in terminal box

- Equipped with a terminal box for easy wiring
- Use in environments that has low probability of damage to the lens due to external forces
- SH1T()/ SH2T() is available in this model



Protection cage mounted type

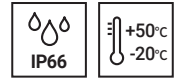
- Equipped with a Protection cage
- Terminals located inside the housing
- Use in environments that has low probability of damage to the lens due to external forces
- SH1()P/SH2()P is available in this model



Terminal box and protection cage mounted type

- Equipped with a protection cage and a terminal box
- Terminal box enables easy wiring
- Damage to the lens from external forces can be prevented with protection cage
- SH1T()P/ SH2T()P is available in this model

# SH1 / SH2



SH1



SH2T

## PRODUCT SPECIFICATION

SH1 | SH2

**Materials** Lens-PC, Housing-AI, STS316L(SH1-SUS)  
 Protection cage-ST316L, Reflector-Heat resistant ABS  
 Bracket-ST316L  
**Ambient operating temperature** -20°C to +50°C  
**Protection rating** IP66  
**Housing standard color** MUNSELL No. 7.5BG 7/2  
**Cable entry** 1/2" PF  
**Revolving speed** 120-140RPM

- Excellent light diffusion effect with multi faced reflector
- Adopts a special power transmission system that reduces noise and wear
- STS housing provides superior durability and corrosion resistance(SH1-SUS, SH1P-SUS)

### SH1 Bulb Revolving Beacons

Model number	Voltage	Current	Bulb			Certificates	Color
			Spec	Standard	Parts no		
SH1 Standard type	DC12V	1.55A	12V15W	G23 15S	17	CCS	● R-Red ● A-Amber ● G-Green ● B-Blue
SH1-SUS Standard type	DC12V	1.55A	12V15W	G23 15S	17		
SH1P Protection cage type	DC24V	850mA	24V15W	G23 15S	18	CE	
SH1P-SUS Protection cage type	DC24V	850mA	24V15W	G23 15S	18		
SH1T Terminal box type	AC110V	200mA	12V15W	G23 15S	17	CE	
SH1TP Protection cage and terminal box type	AC220V	100mA	12V15W	G23 15S	17		

※ CE compliant: DC24V, CCS(SH1 / SH1P only)

### SH2 Bulb Revolving Beacons

Model number	Voltage	Current	Bulb			Certificates	Color
			Spec	Standard	Parts no		
SH2 Standard type	DC12V	1.55A	12V15W	G23 15S	17	CE	● R-Red ● A-Amber ● G-Green ● B-Blue
SH2P Protection cage type	DC24V	850mA	24V15W	G23 15S	18		
SH2T Terminal box type	AC110V	200mA	12V15W	G23 15S	17	CE	
SH2TP Protection cage and terminal box type	AC220V	100mA	12V15W	G23 15S	17		

※ CE compliant: DC24V

### SH1 | SH2 Bulb Revolving Beacons Specification Category and Products Weight Chart

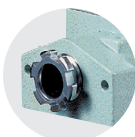
Type	SH1 Series	SH2 Series
Lens diameter	Φ125mm	Φ150mm
Standard	SH1 (1.61kg) SH1-SUS (2.05kg)	SH2 (1.77kg)
Built-in protection cage	SH1P (1.86kg) SH1P-SUS (2.30kg)	SH2P (2.06kg)
Built-in terminal box	SH1T (2.07kg)	SH2T (2.23kg)
Built-in protection cage & Terminal box	SH1TP (2.32kg)	SH2TP (2.52kg)

※ Product weight is based on AC type.

SH1/SH2 models are equipped with flexible connector, and SH1T/SH2T models are equipped with 15C nipple at cable entry.



Flexible connector



15C nipple

### Ordering Specification

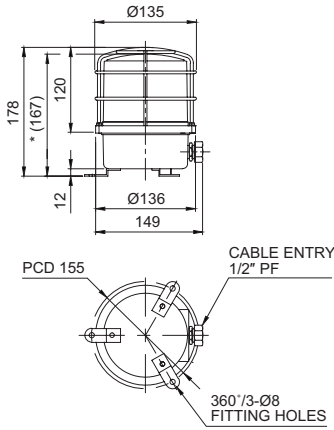
SH1T	-	220	-	R	-	SUS
[Model number]		[Voltage]		[Color]		[Housing materials]
SH1 / SH1P		12-DC12V 24-DC24V 110-AC110V 220-AC220V		● R-Red ● A-Amber ● G-Green ● B-Blue		None - AI SUS - STS316L
SH1T / SH1TP SH2 / SH2P SH2T / SH2TP						

# SH1 / SH2 Series

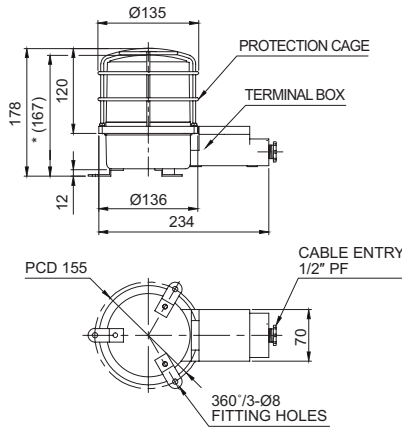
## Technical Diagram

Units: mm

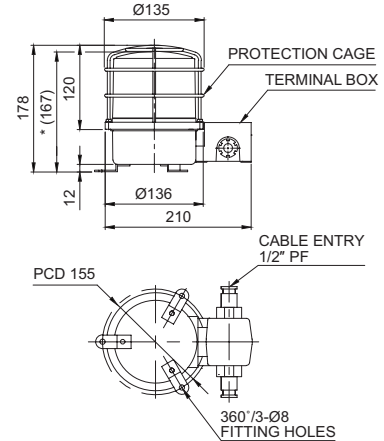
·SH1LRP(-SUS) / SH1LP(-SUS) / SH1SP(-SUS) / SH1P(-SUS)



·SH1TLRP / SH1TLP / SH1TSP / SH1TP

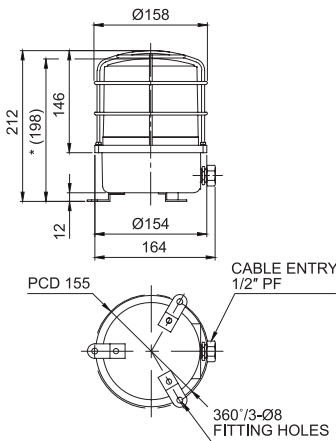


·SH1LR-2TP / SH1L-2TP / SH1S-2TP / SH1-2TP (Cable entry 2EA type)

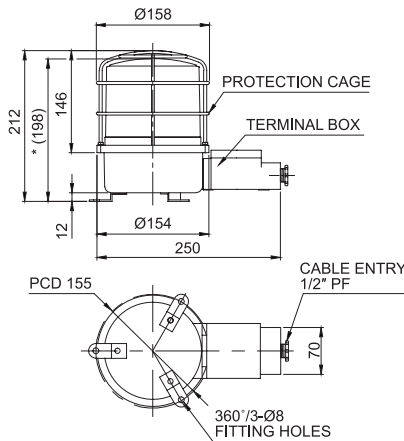


※ \*(167) represents SH1LR(-SUS)/ SH1L(-SUS)/SH1S(-SUS)/ SH1(-SUS), SH1TLR/ SH1TL/ SH1TS/ SH1T size without protection cage.

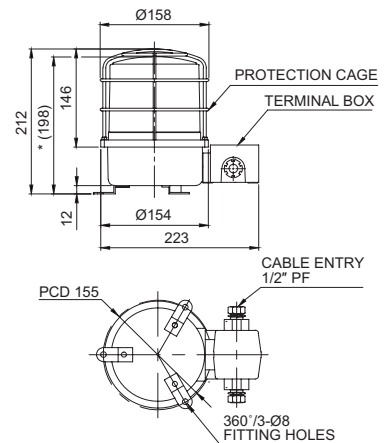
·SH2LRP / SH2LP / SH2SP / SH2P



·SH2TLRP / SH2TLP / SH2TSP / SH2TP



·SH2LR-2TP / SH2L-2TP / SH2S-2TP / SH2-2TP (Cable entry 2EA type)



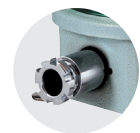
※ \*(198) represents SH2 Series size without protection cage.

## Wiring Instructions

· SH1(-SUS), SH1LR(-SUS), SH2, SH2LR : Black output line is negative(-).

## Customization

- 3/4" PF Cable entry  
Standard cable entry is 1/2" PF, 3/4" PF is customization
- Built-in cable gland type  
Flexible connector is equipped to the standard cable entry
- Brass housing product (SH2(T)S, SH2(T)LR, SH2(T)L, SH2(T) Series only)  
Color will be MUNSELL No. 7.5BG 7/2 when released.
- 2T type has 2 cable entries in the terminal box  
2 cable entries terminal box is a customized add-on.



Built-in cable gland



Brass housing product



2 cable entries terminal box model