



SKTL



SKTLB

PRODUCT SPECIFICATION

SKTL | SKTLB
SKTLM | SKTLBM

Materials Lens-PC, Housing-PC

Ambient operating temperature -30°C to +50°C

Protection rating IP66

Flashing rate 60-80/min

- High brightness LED with special light filter structure provides clear signal light transmission even in outdoor environments with intense sunlight
- Excellent vibration and impact resistance with use of polycarbonate lens
- Lens with special coating material maintains transparency even when exposed to harsh environments where scratches, dust and direct sunlight is possible
- Water resistant, dustproof, and weather resistant structure provides excellent durability under harsh environments such as rainstorms, frost, and intense heat
- Different lights from side to side improve efficiency of emergency signal transmission effect (SKTLM/ SKTLBM)
- 4 strong magnets enable secure attachment to the desired place(SKTLM/ SKTLBM)
- Convenient emergency signal sound control with built-in ON/OFF switch(SKTLBM)
- Can select between standard and built-in buzzer type depending on installation environment



SKTL Cube-Shaped LED Warning Light, Direct Mount

Model number	Voltage	Current	Certificates	Weight	Color
SKTL	DC12V -24V	Max. 880mA	CE	0.35kg	<ul style="list-style-type: none"> ● R-Red ● A-Amber ● G-Green ● B-Blue ○ W-White

· Light effect: Strobe

※ CE compliant: DC12V-24V



SKTLB Cube-Shaped LED Warning Light with Built-in Siren Buzzer, Direct Mount

Model number	Voltage	Current	Certificates	Weight	Volume	Color
SKTLB	DC12V	1.13A	CE	0.45kg	Max.105dB	<ul style="list-style-type: none"> ● R-Red ● A-Amber ● G-Green ● B-Blue ○ W-White
	DC24V	560mA		0.45kg		

· Light effect: Strobe

※ CE compliant: DC24V

Customization

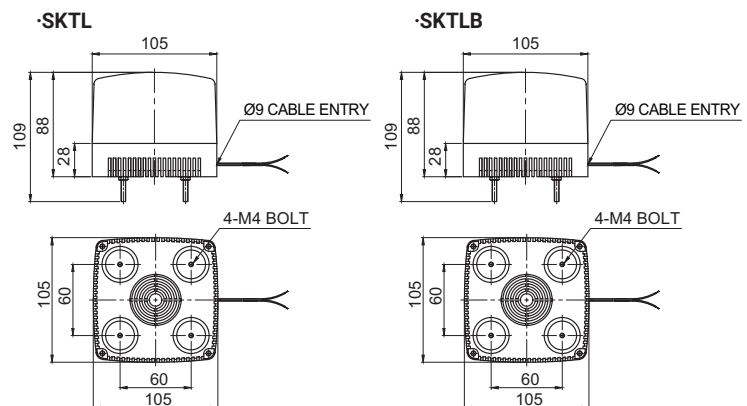
- Strobe left and right,
Flashing left and right(SKTL/SKTLB)

Wiring Instructions

- External Power line(SKTL)
UL1015 AWG18(0.75sq) x 2C 400mm
- External Power line(SKTLB)
UL2464 AWG18(0.75sq) x 3C 400mm
- This product is black output line is negative(-).

Technical Diagram

Units: mm

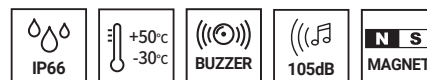


Ordering Specification

SKTL	-	24	-	R
[Model number]		[Voltage]		[Color]
SKTL SKTLB		12/24-DC12V-24V(SKTL) 12-DC12V 24-DC24V		<ul style="list-style-type: none"> ● R-Red ● A-Amber ● G-Green ● B-Blue ○ W-White

Cubic LED Warning Lights for Vehicles

SKTL Series



SKTLM-Normal cigarette lighter plug,
SKTLBM-Operation controlled by ON/OFF switch attached to the cigarette plug

SKTLM Cube-Shaped LED Warning Light for Vehicles with Magnet

Model number	Voltage	Current	Certificates	Weight	Color
SKTLM	DC12V	275mA	CE	0.45kg	R/B-Red/Blue
	DC24V	115mA			

- 4 strong magnets enable secure attachment to curved vehicle surfaces
- Light effect : Flashing left and right
- ※ CE compliant: DC12V, DC24V



SKTLM

SKTLBM Cube-Shaped LED Warning Light with Built-in Siren Buzzer with magnet, Direct Mount

Model number	Voltage	Current	Certificates	Weight	Volume	Color
SKTLBM	DC12V	480mA	CE	0.55kg	Max.105dB	R/B-Red/Blue
	DC24V	290mA		0.55kg		

- Sound volume: Max.105dB at 1m
- Easy control of warning sound with built-in ON/OFF switch
- Light effect : Flashing left and right
- ※ CE compliant: DC24V

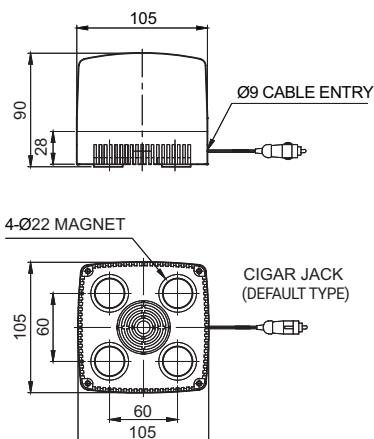


SKTLBM

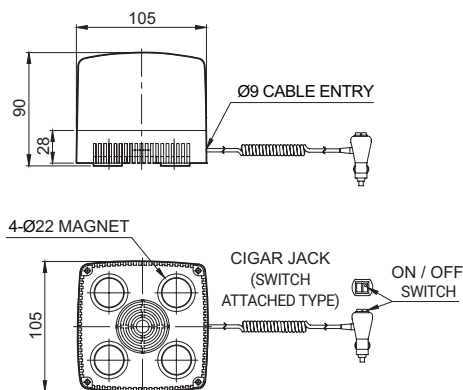
Technical Diagram

Units: mm

·SKTLM



·SKTLBM



The special rubber magnet adheres securely to the vehicle without damaging the surface of the vehicle!

Wiring Instructions

- Cigarette lighter plug, IEC42(0.75sq) x 2P 2m

Ordering Specification

SKTLM	-	24	-	R
[Model number]		[Voltage]		[Color]
SKTLM		12-DC12V		R/B-Red/Blue
SKTLBM		24-DC24V		

Customization

- Color combination except for standard
- Strobe, Strobe left and right (SKTLM/SKTLBM)