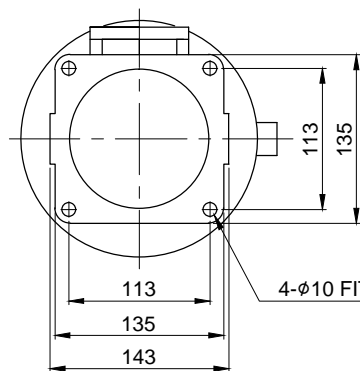
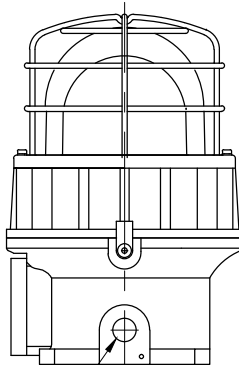




CABLE ENTRY
1/2" NPT



4-10 FITTING HOLES

MARK	DATE	REVISION	REVISER	APP.BY
1				
2				
3				

MODEL NO	SELR			
MATERIAL	HOUSING-AL			
	LENS-TEMPERED GLASS			
	REFLECTOR-PC			
COLOR OF LENS	RED(), AMBER(), GREEN(), BLUE()			
REV. PER MIN.	120 ~ 140			
USE VOLT.	LED	CURRENT	1W	
		DC12V		MAX. 0.183A
		DC24V		MAX. 0.127A
		AC110V		MAX. 0.035A
		AC220V		MAX. 0.017A
PROTECTION GRADE	WATER & DUST PROOF IP66			
CABLE ENTRY	1/2" NPT			
COLOR OF HOUSING	MUNSELL NO. 7.5BG 7/2			
ACTION	LED REVOLVING WARNING LIGHT			

ISO2768-1 : CLASS OF TOLERANCE						SURFACE FINISH	-	-	-	-	1	-
FOR LINEAR DIMENSIONS		f	m	Ⓒ	v		Nr.	DWG. NO.	TITLE/ NAME	MAT'L	QT'Y	REFERENCE
	0.5~3	±0.05	±0.1	±0.2	-		DSND BY S.H.KIM	CHKD BY J.H.PARK	CHKD BY 	APRV BY J.K.HAN	VIEW 3	DATE 2016.08.30
	3~6			±0.3	±0.5							
	6~30	±0.1	±0.2	±0.5	±1		TITLE SELR OUTLINE DRAWING 	MODEL SELR				
	30~120	±0.15	±0.3	±0.8	±1.5				DWG. NO. SELR_OUT			
	120~400	±0.2	±0.5	±1.2	±2.5	SCALE N/S				SIZE A4	REV 00	SHEET 1/1
400~1000	±0.3	±0.8	±2	±4								
FOR ANGULAR DIMENSIONS	0~10	±1°		±1°30'	±3°							
	10~50	±0°30'		±1°	±2°							
	50~120	±0°20'		±0°30'	±1°							
	120~400	±0°10'		±0°13'	±0°30'							

A4(297X210)