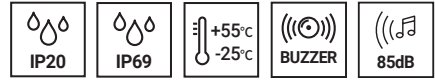


Industrial LED Beacon

EMCL50A / EMCL50B



PRODUCT SPECIFICATION

EMCL50A | EMCL50B

Materials Housing-AL, Lens-PC
Ambient operating temperature -25°C to +55°C
Volume Max. 85dB at 1m
Protection rating
 Standard type-IP69, Built-in buzzer type-IP20

- Small indicator light capable of transmitting three signal colors with one indicator light
- By applying a translucent lens, the unique color of the LED is emitted subtly when turned on
- Built-in buzzer type available



EMCL50A



EMCL50B

EMCL50A / EMCL50B Industrial LED Beacon

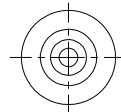
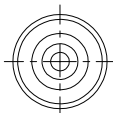
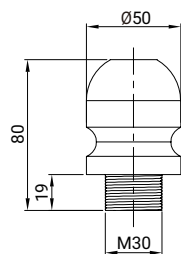
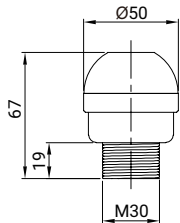
Model number	Voltage	Current	Certificates	Weight	Color
EMCL50A Steady EMCL50A-BZ Steady w/built-in buzzer	DC24V	41mA	CE	0.14kg	● R-Red ● A-Amber ● G-Green
EMCL50B Steady EMCL50B-BZ Steady w/built-in buzzer				0.21kg	

EMCL50A / EMCL50A-BZ

EMCL50B / EMCL50B-BZ

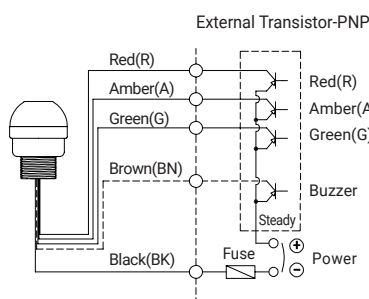
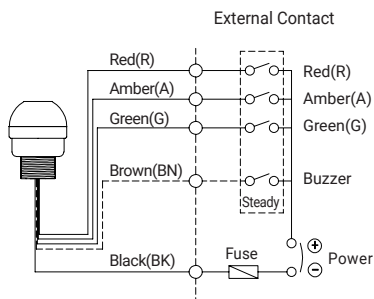
Technical Diagram

Units: mm



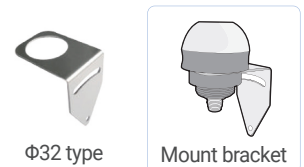
Wiring Instructions

- EMCL50A / EMCL50A-BZ
- EMCL50B / EMCL50B-BZ



Bracket

It can be installed on the wall by adopting wall mounting type bracket.



M12 connector type

5PIN CONNECTOR



No.	Color	Wiring
1	RED	Pin 1
2	AMBER	Pin 2
3	GREEN	Pin 3
4	Common	Pin 4
5	Buzzer	Pin 5

Ordering Specification

EMCL50A	-	24	-	RAG	-	M12
[Model number]		[Voltage]		[Color]		[Cable]
EMCL50A EMCL50A-BZ EMCL50B EMCL50B-BZ		24-DC24V		● R-Red ● A-Amber ● G-Green		None-External contact M12-M12 connector type

Customization

- M12 Fiev-core cable/1.5m
- NPN type