

# Wall Mount Electronic Sounder with Pre-Recorded Special Warning Sound

## SN / SEHN25 / SEHN50



**SN**  
(Max.100dB)



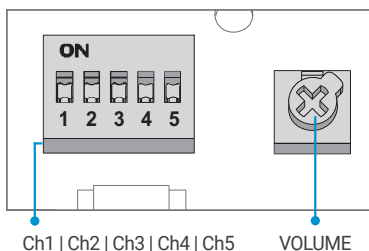
**SEHN25**  
(Max.115dB)



**SEHN50**  
(Max.118dB)

### Wiring Instructions

- Standard specification
- Uses internal switches
- When each channel dip switch is on, a related sound will be played



### PRODUCT SPECIFICATION

SN | SEHN25 | SEHN50

**Materials** Housing-Steel, Horn housing -Steel  
**Ambient operating temperature** -25°C to +50°C  
**Protection rating** IP55  
**Housing standard color** Red

- Steel housing provides excellent vibration and shock resistance under seismic conditions
- A variety of sound selections between warning sounds, alarm sounds, melodies and voice messages to fit your sophisticated application needs
- Can adjust sound volume with the switch built inside the unit

### SN Electronic Sounder, Max.100dB Self Stand Type

Model number	Voltage	Current	Sound pattern and volume	Certificates	Weight
SN	DC12V-24V	Max.265mA	·WS-5 Warning sounds: Max.98dB ·WM-5 Melodies: Max.98dB	CE	0.91kg
	AC110V	65mA	·WA-5 Alarms: Max.100dB		1.06kg
	AC220V	30mA	·WV-5 Customizable sounds: 92-96dB		

※ CE compliant : DC12V-24V, AC220V

※ Max.built-in volume feature is based on WS, WP-Ch3 / WM-Ch4 / WA-Ch4.

※ In case of customized WV 5 tone type, there may be difference of volume depending on user's audio file type.

### SEHN25 Electronic Sounder, Max.115dB Self Stand Type

Model number	Voltage	Current	Sound pattern and volume	Certificates	Weight
SEHN25	DC12V	2.2A	·WS-5 Warning sounds: Max.115dB	-	2.26kg
	DC24V	1A	·WM-5 Melodies: Max.115dB		2.48kg
	AC110V	220mA	·WA-5 Alarms: Max.113dB		
	AC220V	110mA	·WV-5 Customizable sounds: 99-112dB		

※ Max.built-in volume feature is based on WS, WP-Ch1 / WM-Ch5 / WA-Ch2.

※ In case of customized WV 5 tone type, there may be difference of volume depending on user's audio file type.

### SEHN50 Electronic Sounder, Max.118dB Self Stand Type

Model number	Voltage	Current	Sound pattern and volume	Certificates	Weight
SEHN50	DC12V	2.45A	·WS-5 Warning sounds: Max.118dB	-	2.67kg
	DC24V	1.15A	·WM-5 Melodies: Max.115dB		3.30kg
	AC110V	280mA	·WA-5 Alarms: Max.118dB		
	AC220V	170mA	·WV-5 Customizable sounds: 108-118dB		

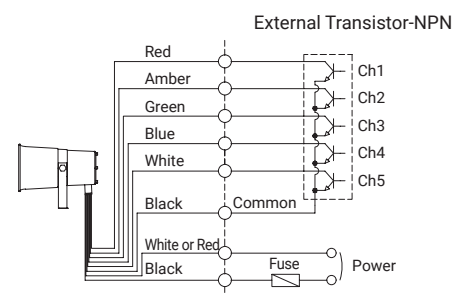
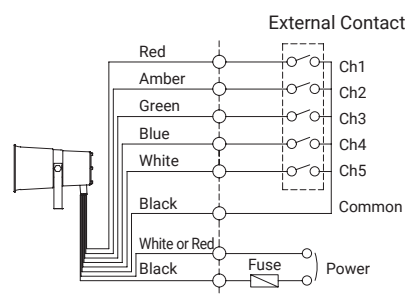
※ Max.built-in volume feature is based on WS, WP-Ch1 / WM-Ch4 / WA-Ch2.

※ In case of customized WV 5 tone type, there may be difference of volume depending on user's audio file type.

※ Please refer to [Sound tone and combination for standard product] on this catalogue for detailed sound tone specification

### ·SN / SEHN25 / SEHN50-DC/AC

- Customization: Uses external contact(LC)



· External power line - VCTF(0.75sq) x 2C 400mm

· LC type external signal line - UL1007 AWG22(0.3sq) 400mm

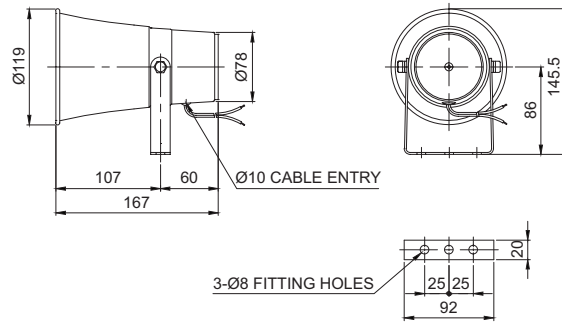
· Product can be wired regardless of polarity.



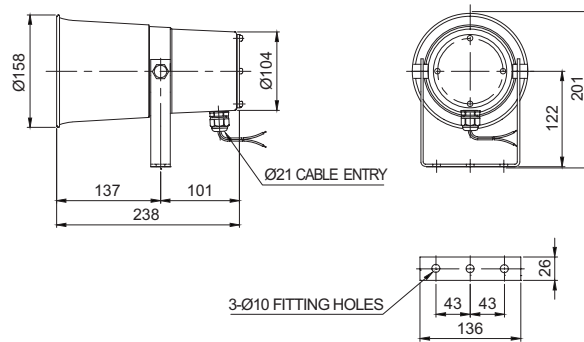
## Technical Diagram

Units: mm

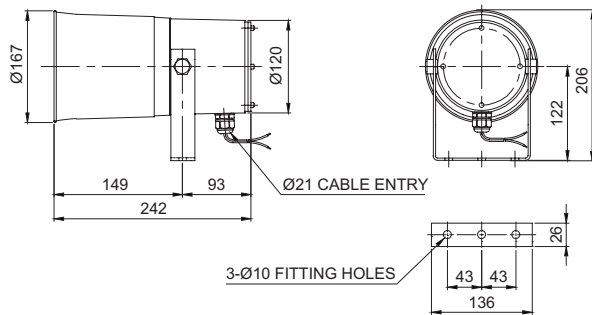
·SN



·SEHN25



·SEHN50



## Customization

- You can select the audible sound pattern using External Contacts or transistor with a customized external sound line. (Model number : -LC)

## Ordering Specification

SEHN25	-	WA	-	220	-	LC
[Model number]		[Sounds]		[Voltage]		[sound selection]
SN SEHN25 SEHN50		WS-Warning WM-Melody WA-Alarm WV-Customizable sound		12-DC12V 24-DC24V 12/24-DC12V-24V(SN only) 110-AC110V 220-AC220V		None-Built-in switch LC Type-Uses external contact