

PRODUCT SPECIFICATION

QEAL1

ICAO standard Low intensity B type
Materials Lens-Tempered glass, Housing-Al,
 Protection cage-STSS316L, Heat sink-Al
Ambient operating temperature $-40^{\circ}\text{C} \leq T_{\text{amb}} \leq +60^{\circ}\text{C}$
Protection rating KCs - Ex db IIC T4 Gb IP66
Certificates ICAO, KCs
Standard housing color Red
Cable entry 1/2" NPT
Light source High intensity light emitting diodes(LED)
Light color Red
Luminous intensity 50cd \pm 25%
Light function Steady

- Low Intensity B type explosion proof aviation obstruction light
- Features high visibility from a distance with the direct LED light distribution system
- Cost savings enabled by using a long lasting LED light source which eliminates the need for maintenance
- Aluminum housing provides excellent durability
- Terminals located inside the housing for wiring



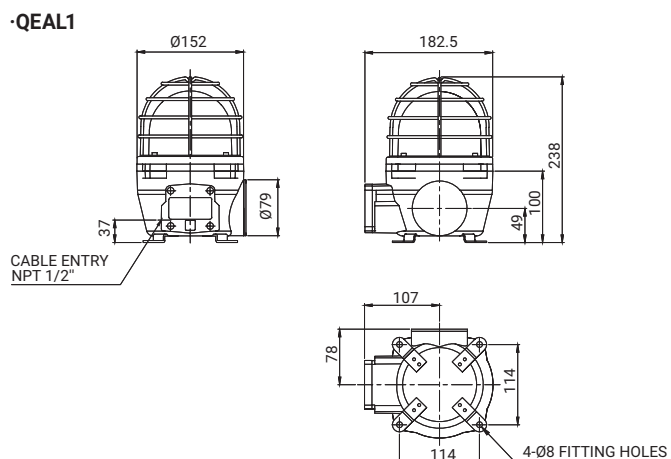
QEAL1

QEAL1 Explosion Proof Low Intensity LED Aviation Obstruction Light

Model number	Voltage	Power consumption	Certificate	Weight	Light color
QEAL1	DC12V	Max.26.7W		3.90kg	● Red
	DC24V				
	AC110V-240V				

Technical Diagram

Units: mm



Customization

- Built-in explosion proof cable gland available(Standard type does not provide explosion proof cable gland)
- Customized 2 cable entries available
- Customized cable entry(M20x1.5) available
- Built-in darkness detecting sensor available
- Amber housing, mounting bracket is available upon request

Ordering Specification

QEAL1	-	24	-	R
[Model number]		[Voltage]		[Color]
QEAL1		12-DC12V 24-DC24V 110/240-AC110V-240V		● R-Red