



## PRODUCT SPECIFICATION

SKLR | SKMLR

**Materials** Lens-AS, Housing-ABS

Reflector-Heat resistant ABS

**Ambient operating temperature** -20°C to +50°C**Protection rating** IP54**Revolving speed** 120-140RPM**Compliant with RoHS directive**

- Ø70mm xenon lamp strobe signal lights
- High efficiency strobe light that offers excellent outdoor visibility and long-distance signal light luminance close to natural light
- Lamp connector fastening structure allows for convenient lamp replacement
- Bottom nut base allows for convenient mounting



SKLR

### SKLR Streamlined LED Revolving Warning Light

Model number	Voltage	Current	Certificates	Weight	Color
SKLR	DC12V	420mA	-	0.38kg	<span style="color: red;">●</span> R-Red <span style="color: yellow;">●</span> A-Amber <span style="color: green;">●</span> G-Green <span style="color: blue;">●</span> B-Blue
	DC24V	265mA		0.38kg	

- Has a 4 bolt structure to fix the product
- Compliant with RoHS directive

### SKMLR Streamlined LED Revolving Warning Light

Model number	Voltage	Current	Certificates	Weight	Color
SKMLR	DC12V	420mA	-	0.46kg	<span style="color: red;">●</span> R-Red <span style="color: yellow;">●</span> A-Amber <span style="color: green;">●</span> G-Green <span style="color: blue;">●</span> B-Blue
	DC24V	265mA		0.46kg	

- 4 strong magnets enable secure attachment to the vehicle



SKMLR

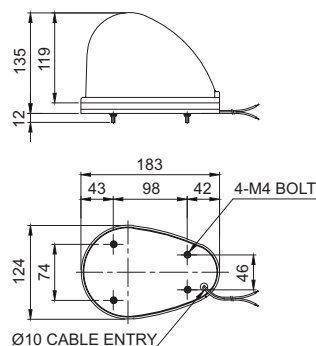
## Wiring Instructions

- External Power line(SKLR) UL1015 AWG18(0.75sq) x 2C 400mm
- External Power line(SKMLR) Cigarette lighter plug, IEC42(0.75sq) x 2P 2m
- DC Type: Black output line is negative(-)

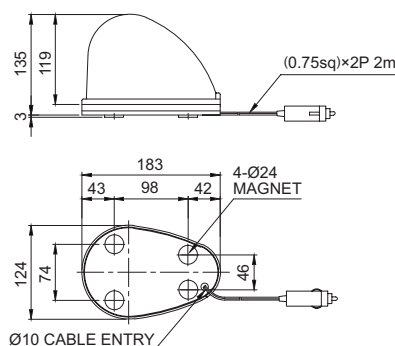
## Technical Diagram

Units: mm

·SKLR



·SKMLR



## Ordering Specification

SKLR	-	24	-	R
[Model number]		[Voltage]		[Color]
SKLR		12-DC12V		<span style="color: red;">●</span> R-Red <span style="color: yellow;">●</span> A-Amber <span style="color: green;">●</span> G-Green <span style="color: blue;">●</span> B-Blue
SKMLR		24-DC24V		