

Ø92mm Explosion Proof LED Signal Beacon(Cold Resistance Type)

QNE-CR Series

Flame proof LED signal light that features steady/flashing, strobe, and simulated revolving light functions in one unit



QNE-CR



QNE-CR-SUS

PRODUCT SPECIFICATION

QNE-CR | QNE-CR-SUS

Materials Lens-Tempered glass, Filter-PC, Bracket-ST5316L, Protection cage-ST5316L, Housing-Al(QNE-CR), ST5316L(QNE-CR-SUS)

Ambient operating temperature

-52°C ≤ Tamb ≤ +60°C (T5)

-52°C ≤ Tamb ≤ +50°C (T6)

Explosion protection rating

IECEX - Ex db IIC T6/T5 Gb, Ex tb IIIC T85°C/T100°C Db

ATEX - Ex II 2G Ex db IIC T6/T5 Gb,

Ex II 2D Ex tb IIIC T85°C/T100°C Db

Certificates ATEX, IECEX

Housing standard color Red, MUNSELL No. 7.5BG 7/2

Cable entry 1/2" NPT

Flashing rate(LF type) 60-80 flashes/min.

Strobe rate(LS type) 70-80 flashes/min.

Simulated revolving rate(LR type) 120-140RPM

- Small explosion proof ATEX/IECEX certified LED signal beacon
- Multiple lighting effects such as LED steady/flashing, strobe, and simulated revolving
- ATEX/IECEX ex-proof beacon sounder combination unit that can be used in an environment of extremely low temperature as low as -52°C(-61.6°F)
- Cold resistant parts realizes stable operation of beacon at very low temperature
- Features excellent shock and vibration resistance, maintenance significantly reduced with long-lasting LED light source
- Features superior durability with aluminum housing(QNE-CR)
- STS housing provides superior durability and corrosion resistance(QNE-CR-SUS)
- Fully enclosed structure with protection rating of IP66

QNE-CR Explosion Proof Signal Beacon with Cold Resistance

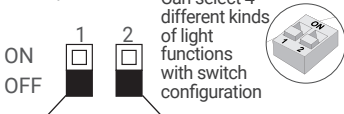
Model number	Voltage	Current	Certificates	Weight	Color
QNE-CR	DC12V-24V	Max.350mA	IECEX	2.05kg	● R-Red
	AC110V-230V	Max.110mA	ATEX		● A-Amber ● G-Green ● B-Blue

QNE-CR-SUS Explosion Proof Signal Beacon with Cold Resistance, STS Housing

Model number	Voltage	Current	Certificates	Weight	Color
QNE-CR-SUS	DC12V-24V	Max.350mA	IECEX	4.65kg	● R-Red
	AC110V-230V	Max.110mA	ATEX		● A-Amber ● G-Green ● B-Blue

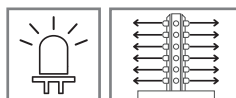
Instruction for Light Function Switch

ON=1/OFF=0

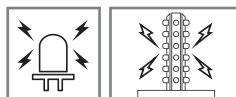


No.	1	2	Operation
0	0	0	LED Steady
1	0	1	LED Flashing
2	1	0	LED Strobe
3	1	1	LED Simulated revolving flashing

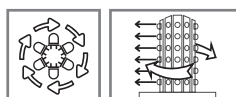
Operation



• **LED Steady/Flashing**
Repeat operation of LED light on/off



• **LED Strobe**
Short LED steady/flashing. Creates a xenon flashing effect by providing maximum electric current

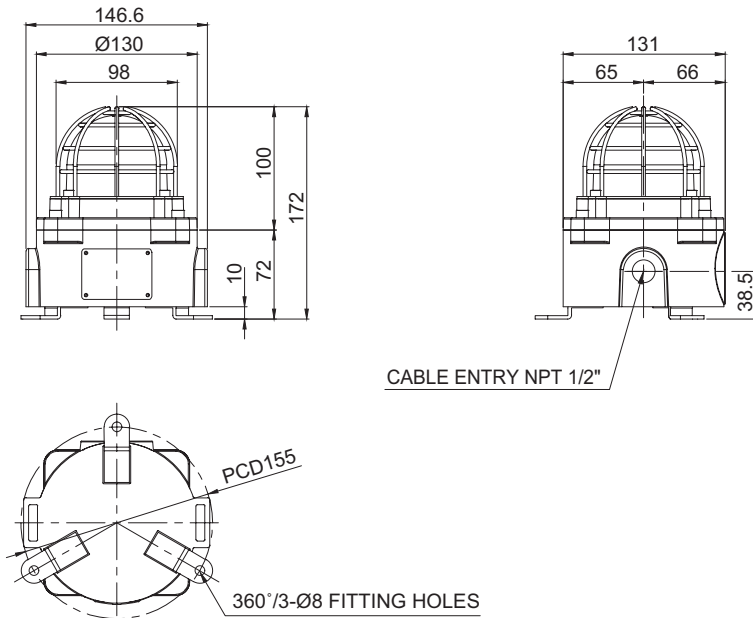


• **LED Simulated Revolving Flashing**
LED flashes steadily around the cylindrical LED filaments which makes a simulated revolving effect

Technical Diagram

Units: mm

·QNE-CR / QNE-CR-SUS



Customization

- Explosion proof cable gland attached type available (Standard type does not come with explosion proof cable gland)
- 2 ways cable entries
- M20×1.5, 3/4" NPT cable entry

Ordering Specification

QNE-CR	-	110/230	-	R	-	SUS	-	IECEX
[Model number]		[Voltage]		[Color]		[Housing materials]		[Certificates]
QNE-CR		12/24-DC12V-24V 110/230-AC110V-230V		<ul style="list-style-type: none"> ● R-Red ● A-Amber ● G-Green ● B-Blue 		None - Al SUS-ST316L		IECEX ATEX