



**SM30**  
(Max.110dB)



**SM40**  
(Max.116dB)

## PRODUCT SPECIFICATION

SM30 | SM40

**Materials** SM30-Steel, SM40-ABS

**Ambient operating temperature** -25°C to +50°C

**Housing standard color** SM30-Red, SM40-Gray

**Motor RPM** SM30-10,000RPM, SM40- 7,000RPM

**Insulation resistance** 100MΩ(at 500VDC)

- SM30: Ø80mm compact structure with 110dB sound output
- SM40: Ø100mm compact structure with 116dB sound output

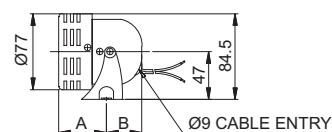
### SM30 Miniature Motor Siren, Max.110dB

Model number	Volume	Voltage	Current	Certificates	Weight	Rated time
SM30	Max.110dB	DC12V	5.100A	-	0.22kg	10 min
		DC24V	3.000A		0.22kg	
		AC110V	1.220A		0.42kg	
		AC220V	0.750A		0.42kg	

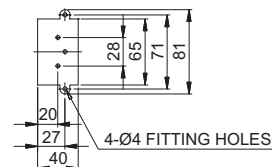
### Technical Diagram

Units: mm

-SM30



MODEL	A(mm)	B(mm)
SM30-DC	47	35
SM30-AC	72.5	32



### Precautions for Use

Continuous operation rating time is 10 mins. Over 10 mins of continuous operation may cause motor damage. Please be careful.

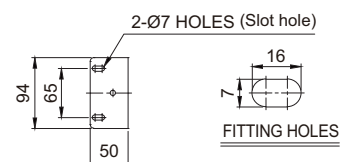
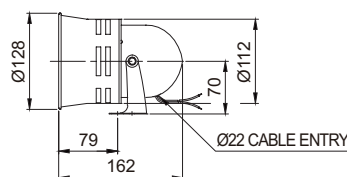
### SM40 Miniature Motor Siren, Max.116dB

Model number	Volume	Voltage	Current	Certificates	Weight	Rated time
SM40	Max.116dB	DC12V	4.500A	-	0.53kg	10 min
		DC24V	3.000A		0.53kg	
		AC110V	1.000A		0.68kg	
		AC220V	0.730A		0.68kg	

### Technical Diagram

Units: mm

-SM40



### Ordering Specification

SM30	-	24
[Model number]		[Voltage]
SM30		12-DC12V
SM40		24-DC24V
		110-AC110V
		220-AC220V



### PRODUCT SPECIFICATION

SM200 | SM400

**Materials** SM200-Steel/Al, SM400-Steel/ABS  
**Ambient operating temperature** -25°C to +50°C  
**Housing standard color** Red  
**Motor RPM** SM200-7,200RPM, SM400- 7,600RPM  
**Insulation resistance** 100MQ(at 500VDC)

- SM200: Excellent durability and high volume are suitable for noisy environment
- SM400: 123dB high volume model suitable for long-distance audible signal in noisy environments



**SM200**  
(Max.120dB)



**SM400**  
(Max.123dB)

### SM200 Motor Siren Max.120dB

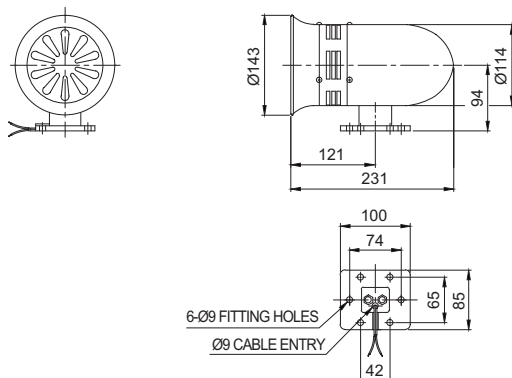
Model number	Volume	Voltage	Current	Certificates	Weight	Rated time
SM200	Max.120dB	DC24V	11.000A	CE	2.19kg	10 min
		AC110V	2.850A		2.55kg	
		AC220V	1.700A		2.55kg	

※ CE compliant : DC24V

#### Technical Diagram

Units: mm

·SM200



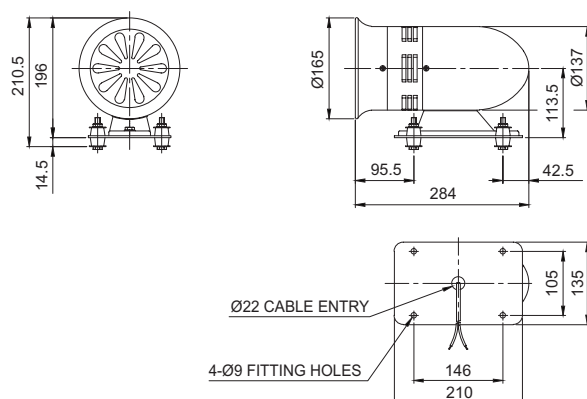
### SM400 Motor Siren Max.123dB

Model number	Volume	Voltage	Current	Certificates	Weight	Rated time
SM400	Max.123dB	DC24V	5.700A	-	3.19kg	3 min
		AC110V	4.100A		3.75kg	
		AC220V	3.200A		3.75kg	

#### Technical Diagram

Units: mm

·SM400



### Precautions for Use

The rated continuous operation time of motor siren SM200 is 10 minutes, and the rated continuous operation time of SM400 is 3 minutes. Please be careful as continuous operation outside of the rated time of each motor siren may cause damage to the motor.

### Ordering Specification

SM200	-	24
[Model number]		[Voltage]
SM200		24-DC24V
SM400		110-AC110V
		220-AC220V