

# Wireless Network System Instructions

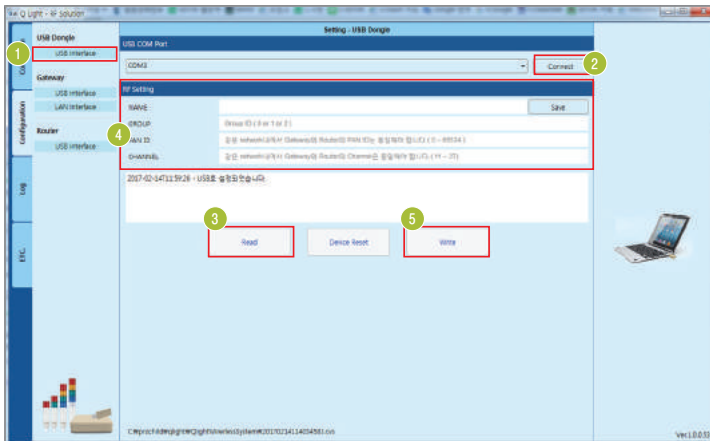
## 2. Connection Instructions

### 1) USB Dongle

- PC program allows you to configure wireless devices such as gateways, USB dongles and signaling devices, and can also monitor or control the status of the signaling devices.
- Check the COM port after the USB Dongle is connected(RS-232).
- Click Start -> Control Panel -> Device Manager -> Port (COM & LPT)

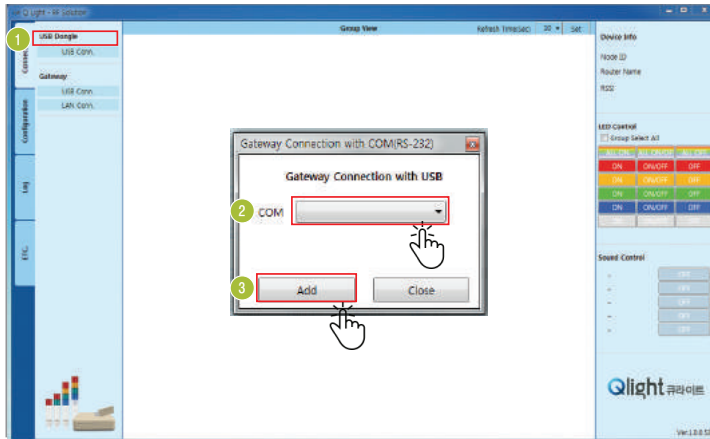


### · USB Dongle Setting



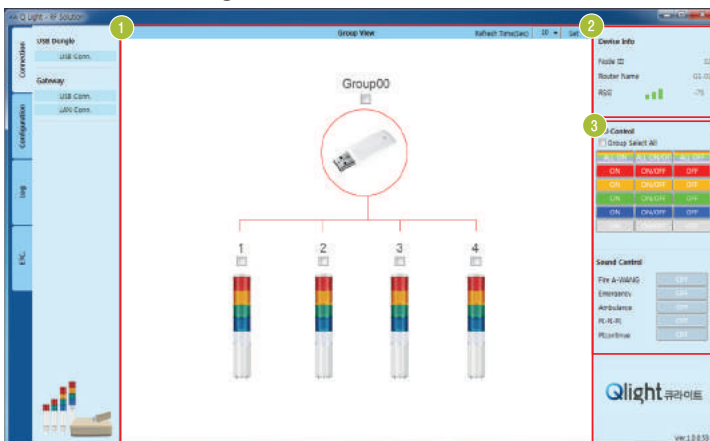
- 1 Config>USB DONGLE>Select “USB Interface”
- 2 Check the COM port of your PC and press “Connect” button to connect to the USB Dongle
- 3 Select “Read” to read RF information of the currently set USB dongle
- 4 Check and modify RF information of the USB dongle (RF info includes “NAME”, “PANID”, “CHANNEL”, “GROUP”, etc.)
- 5 Press “Write” button to save the modified information.

### · USB Dongle Connection



- 1 Connection>USB DONGLE>Press “USB Interface” Button
- 2 Select COM port in the pull down window
- 3 Press “ADD” button to connect USB dongle

### · Device Monitoring & Control



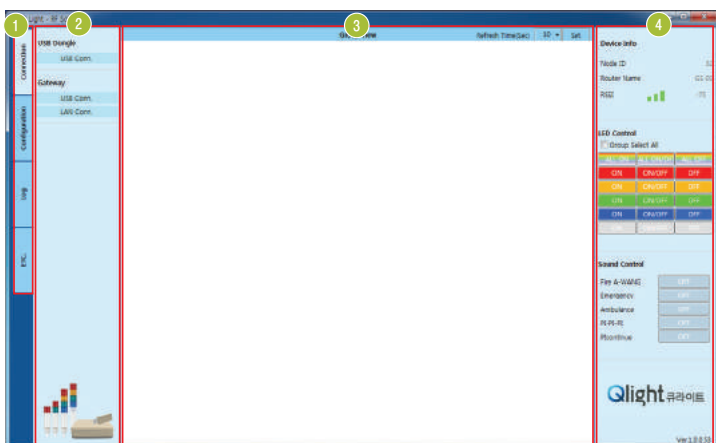
- 1 Identify devices that are connected wirelessly via USB dongle
  - Select a connected device (can select individually or in group)
- 2 Check the information of selected device (ID, Name, Signal strength)
- 3 Can control operation of selected devices individually or in group

# Wireless Network System Instructions

## 2) Gateway

- The PC program allows you to configure wireless devices such as gateways, USB dongles and signaling devices, and can also monitor or control the status of the signaling devices.
- Setting and Usage**
  - The PC program allows you to configure wireless devices such as gateways, USB dongles and signaling devices, and can also monitor or control the status of the signaling devices.
  - With the Gateway linked to the Ethernet Network users can check or control the operation status of devices by smartphone. The control PC uses IIS function to enable access to the smartphone in WINDOW XP or later versions.

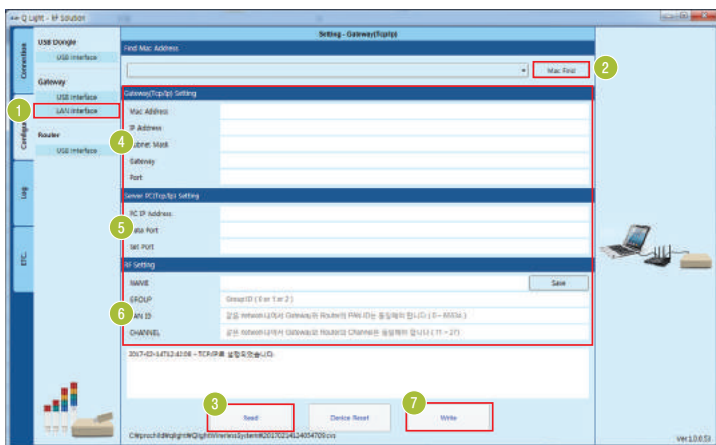
■ What is IIS? IIS stands for Microsoft's Internet information Services which is a WINDOWS service used for web service. With IIS, services such as FTP, SMTP, NNTP, and HTTP / HTTPS are available.



- 1 Tab**
  - Connection : USB dongle, gateway connection setup
  - Configuration : USB dongle, gateway, router setup
  - Log : Stores log data and displays status of router through data viewer
  - Manual : User's guide for sample PC tool
- 2 Menu**  
Provides detailed menu selections for each tab
- 3 Wireless network viewer**  
Displays network status of the wireless devices
- 4 Status**  
Displays the operation status and enables control of the wireless devices

\* Please refer to the separate manual for detailed settings and instruction

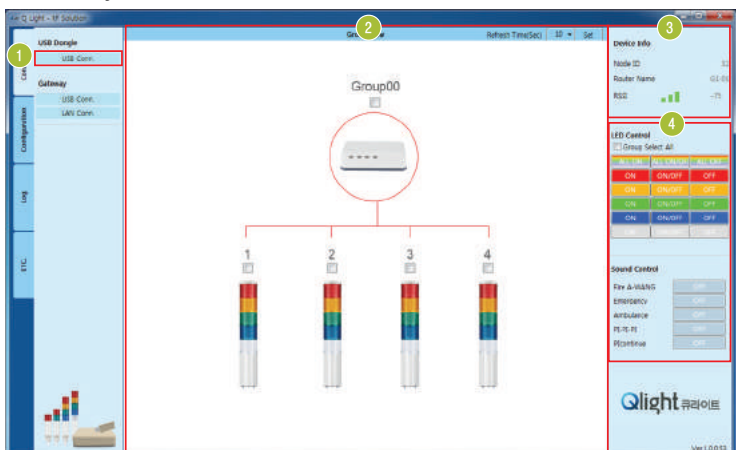
## GATEWAY SETTING



- 1 Config>Gateway>Select "Lan Interface"**
- 2 Click "Mac Find" to search the mac address of gateway**
- 3 Press "Read" to check the current setting using the mac address of the gateway**
- 4 Check and modify the network information of the gateway**
- 5 Check and modify the network information of the PC server**
- 6 Check and modify RF information of gateway**
- 7 Save the modified settings**

# Wireless Network System Instructions

## •Gateway Connection



- 1 Connection>Gateway>Select "Lan Interface"
- 2 Select wireless device
  - Can select individually or in groups
  - Can check the operation status of the currently operating wireless devices
- 3 Can check the wireless setting of the selected devices
- 4 Can control selected individual device or group of devices

\* The method of USB connection using the Gateway is same with the method of USB connection using USB DONGLE

## 3) Smartphone

- In order to use smartphone the gateway and wired/wireless router should be connected.
- Access to the web page from smartphone using the IP address of the administrator's PC with IIS set up.
- Log into your account in the login page and select the connected Gateway.
- Monitor or control the selected device by selecting the signaling device connected to the selected gateway.



Connect to web page



Connect to web page



Select connected wireless device



Monitor or control the status of selected device