

PRODUCT SPECIFICATION

EBL

Materials

Housing-Al, Lens-Tempered glass, Bracket-Al
Ambient operating temperature -25°C to +55°C
Protection rating IP67



EBL

- Waterproof, dustproof, oil-resistant LED work light of performance line
- Excellent oil resistance in machine tools where high-temperature cutting oil is used
- Low power consumption and long life by using high-efficiency LED
- Among body lengths of 300/500/600mm, select a suitable specification according to the lighting range and installation space
- 1.5m cable withdrawal type is standard, M12 connector type is available upon request

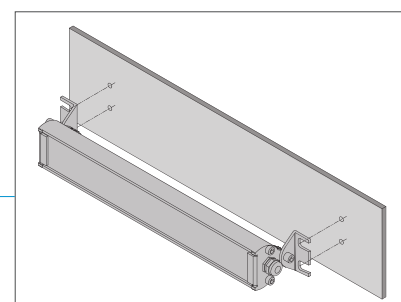
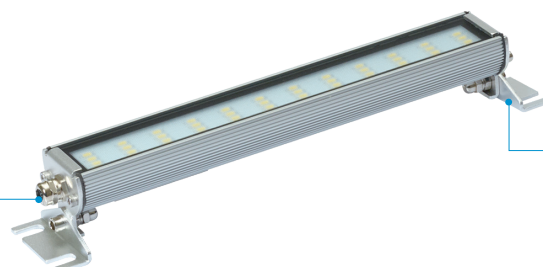
EBL LED Work Lights

		Optics Specifications		
Model number		EBL300	EBL500	EBL600
Lens color			Transparent	
Light color			Cooldaylight	
Color temperature			6,000-6,500K	
Luminous flux	DC	-	1,500lm	1,800lm
	AC	1,000lm	-	-
Illumination (at 1m)	DC	-	700Lux	700Lux
	AC	300Lux	-	-
		Specifications		
Model number		EBL300	EBL500	EBL600
Voltage		AC220V	DC24V	DC24V
Range for operation voltage		AC200-240V	DC24V	DC24V
Power consumption	DC24V	-	15W	18W
	AC220V	10W	-	-
Insulation resistance		Min. 100MΩ(500V DC mega ohm meter)		
Withstanding voltage		DC: 500VAC, 60Hz, 1 minute/AC: 1,500VAC, 60Hz, 1 minute		
Operating temperature		-25°C to +55°C		
Protection rating		IP67		
Materials		Housing-Al, Lens-Tempered glass, Bracket-Al		
Certification		CE		
Weight(Approx.)		0.50kg	0.70kg	0.80kg

※ CE compliant : DC24V

Structural Features

M12 connector



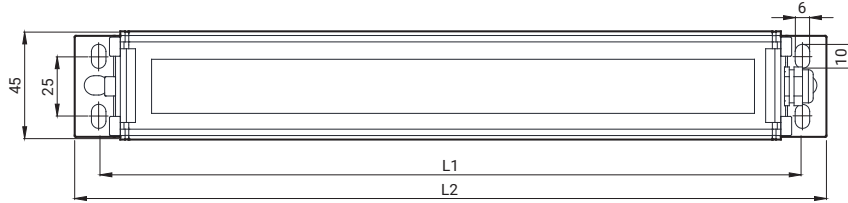
Mount bracket



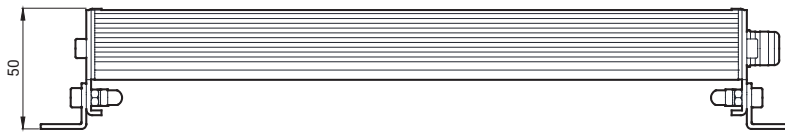
Technical Diagram

Units: mm

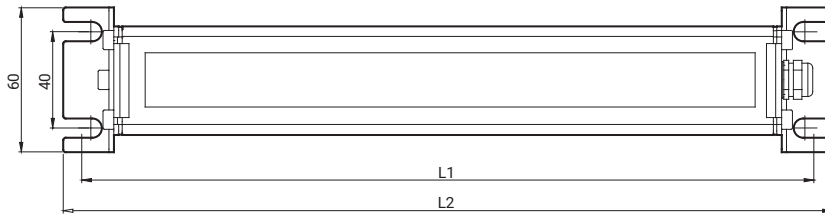
• EBL(B Bracket)



Model number	L1	L2
EBL300	293	313
EBL500	508	528
EBL600	592	612



• EBL(C Bracket)



Model number	L1	L2
EBL300	304	320
EBL500	515	531
EBL600	602	618



Ordering Specification

EBL	-	300	-	24	-	C
[Model number]		[Product length]		[Voltage]		[Bracket]
EBL		300-10W 500-15W 600-18W		24-DC24V 220-AC220V		B-B Bracket C-C Bracket