

## S80 Series



### PRODUCT SPECIFICATION

S80AS

**Materials** Lens-AS, Housing-ABS  
**Ambient operating temperature** -30°C to +50°C  
**Volume** Max.90dB at 1m  
**Protection rating** IP44  
**Flashing rate** 60-80/min

- Ø80mm xenon lamp strobe signal lights
- It has high instantaneous luminous efficiency and emits signal light close to natural light, providing excellent long-distance visibility
- Lamp connector fastening structure allows for convenient lamp replacement
- Can select between standard and built-in buzzer type depending on installation environment



S80AS

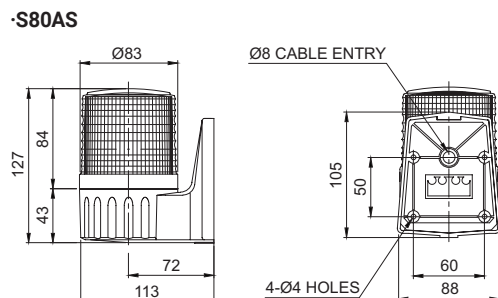
### S80AS Xenon Lamp Strobe Signal Lights

Model number	Voltage	Current	Xenon lamp			Certificates	Weight	Color
			Spec	Standard	Parts no			
S80AS	DC12V-24V	Max. 510mA	220V -350V	BGA2120	47	-	0.27kg	<div><div></div> R-Red</div>
	AC110V	210mA		-BBC			0.24kg	<div><div></div> A-Amber</div>
	AC220V	200mA		Itype			0.24kg	<div><div></div> G-Green</div> <div><div></div> B-Blue</div>

※ DC type model has a free-voltage range of 10V-30V

### Technical Diagram

Units: mm



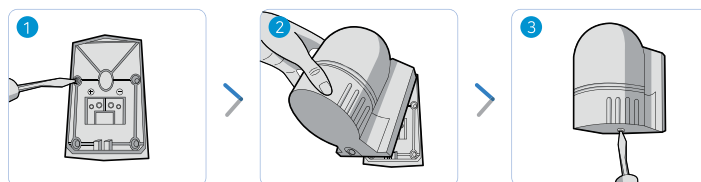
### Customization

- Dome type lens

### Wiring Instructions

- Attach the Power supply wire to the terminal block
- This product can be wired regardless of polarity.

### Mounting Instructions



- 1 Secure the base plate to the mounting surface, and the Power line to the terminal block
- 2 Mount the warning light by inserting the ring(hook) into the upper part of the base plate
- 3 Screw in the bolt at the base of the mounting bracket to complete assembly

### Ordering Specification

S80AS	-	BZ	-	12/24	-	R
[Model number]   S80AS		[Buzzer option]   (None) - No buzzer BZ - Built-in buzzer		[Voltage]   12/24-DC12V-24V 110-AC110V 220-AC220V		[Color]   ● R-Red ● A-Amber ● G-Green ● B-Blue



### S80A Series enable easy wiring

S80A Series enables easy wiring with its terminal block attached to the fixed base plate. With this system the contacts in the housing sends Power directly to the terminal block.