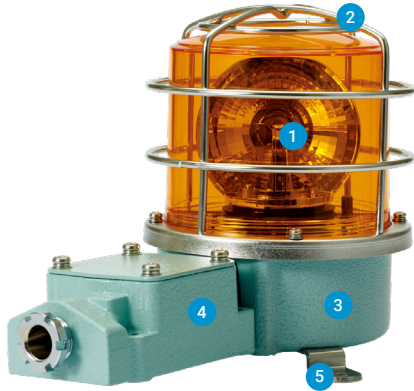


SH1 / SH2 Series

Superior durability with fully enclosed structure and corrosion resistance, suitable for vessels and heavy industry applications



PRODUCT SPECIFICATION

SH1 Series | SH2 Series

Materials Lens-PC, Housing-Al, STS316L(SH1-SUS)

Protection cage-ST316L, Reflector-PC, Reflector for bulb type-Heat resistant ABS, Bracket-ST316L

Protection rating IP66

Housing standard color MUNSELL No. 7.5BG 7/2

Cable entry 1/2" PF

- Aluminum housing and polycarbonate lens material provides excellent impact resistance under seismic conditions
- STS housing provides superior durability and corrosion resistance(SH1-SUS)
- Excellent hermetic structure that blocks water and dust
- Can select a variety of light sources (Bulb, LED, and xenon) for your application needs and environmental conditions
- Terminals located inside the terminal box or product

1 Lenses

- Utilizes a strong and durable polycarbonate material with excellent shock and vibration resistance
- The lens surface has two types depending on the light source function-Light diffusion type and light transmission type



Light transmission type

LED revolving type
Bulb revolving type
SH()LR | SH()



Light diffusion type

LED steady/flashing type
xenon lamp strobe type
SH()L | SH()S

2 Protection cage

- The durable protection cage is made of corrosion resistant stainless steel that prevents damage to the lens from external contact
- Materials: STS316L

3 Housing

- The special aluminum body housing features superior durability
- STS housing provides superior durability and corrosion resistance(SH1-SUS)
- The housing is corrosion resistant from a special anodized surface treatment process
- Materials: Al, STS316L(SH1-SUS)

4 Terminal box

- Terminal box is located on the side of housing for easy wiring
- Materials: Al

5 Brackets

- Stainless steel mounting bracket is conveniently attached to the outer surface of the product
- Materials: STS316L

A Variety of Selectable Light Source and Function Combinations

You can select from a variety of light sources for your work environment, condition, and purpose. Basic specifications are as follows.

- LED revolving type
- LED steady/flashing type
- xenon lamp strobe type
- Bulb revolving type

Customization

- LED Strobe type
- LED revolving type

Product Categories



Standard type

- Protection cage or terminal box not attached
- Terminals located inside the housing
- Use in environments that has low probability of damage to the lens due to external forces
- SH1/SH2 Series is available in this model



Built-in terminal box

- Equipped with a terminal box for easy wiring
- Use in environments that has low probability of damage to the lens due to external forces
- SH1T()/ SH2T() is available in this model



Protection cage mounted type

- Equipped with a Protection cage
- Terminals located inside the housing
- Use in environments that has low probability of damage to the lens due to external forces
- SH1()P/SH2()P is available in this model



Terminal box and protection cage mounted type

- Equipped with a protection cage and a terminal box
- Terminal box enables easy wiring
- Damage to the lens from external forces can be prevented with protection cage
- SH1T()P/ SH2T()P is available in this model



SH1



SH2T

PRODUCT SPECIFICATION

SH1 | SH2

Materials Lens-PC, Housing-AI, STS316L(SH1-SUS)
 Protection cage-ST316L, Reflector-Heat resistant ABS
 Bracket-ST316L
Ambient operating temperature -20°C to +50°C
Protection rating IP66
Housing standard color MUNSELL No. 7.5BG 7/2
Cable entry 1/2" PF
Revolving speed 120-140RPM

- Excellent light diffusion effect with multi faced reflector
- Adopts a special power transmission system that reduces noise and wear
- STS housing provides superior durability and corrosion resistance(SH1-SUS, SH1P-SUS)

SH1 Bulb Revolving Beacons

Model number	Voltage	Current	Bulb			Certificates	Color
			Spec	Standard	Parts no		
SH1	Standard type	DC12V	1.545A	12V15W	G23 15S	17	 R-Red A-Amber G-Green B-Blue
SH1-SUS	Standard type	DC12V	1.545A	12V15W	G23 15S	17	
SH1P	Protection cage type	DC24V	0.850A	24V15W	G23 15S	18	
SH1P-SUS	Protection cage type	DC24V	0.850A	24V15W	G23 15S	18	
SH1T	Terminal box type	AC110V	0.200A	12V15W	G23 15S	17	
SH1TP	Protection cage and terminal box type	AC220V	0.105A	12V15W	G23 15S	17	

※ CE compliant: DC24V, CCS(SH1 / SH1P only)

SH2 Bulb Revolving Beacons

Model number	Voltage	Current	Bulb			Certificates	Color
			Spec	Standard	Parts no		
SH2	Standard type	DC12V	1.545A	12V15W	G23 15S	17	 R-Red A-Amber G-Green B-Blue
SH2P	Protection cage type	DC24V	0.850A	24V15W	G23 15S	18	
SH2T	Terminal box type	AC110V	0.200A	12V15W	G23 15S	17	
SH2TP	Protection cage and terminal box type	AC220V	0.105A	12V15W	G23 15S	17	

※ CE compliant: DC24V

SH1 | SH2 Bulb Revolving Beacons Specification Category and Products Weight Chart

Type	SH1 Series	SH2 Series
Lens diameter	Φ125mm	Φ150mm
Standard	SH1 (1.61kg) SH1-SUS (2.05kg)	SH2 (1.77kg)
Built-in protection cage	SH1P (1.86kg) SH1P-SUS (2.30kg)	SH2P (2.06kg)
Built-in terminal box	SH1T (2.07kg)	SH2T (2.23kg)
Built-in protection cage & Terminal box	SH1TP (2.32kg)	SH2TP (2.52kg)

※ Product weight is based on AC type.

SH1/SH2 models are equipped with flexible connector, and SH1T/SH2T models are equipped with 15C nipple at cable entry.



Flexible connector



15C nipple

Ordering Specification

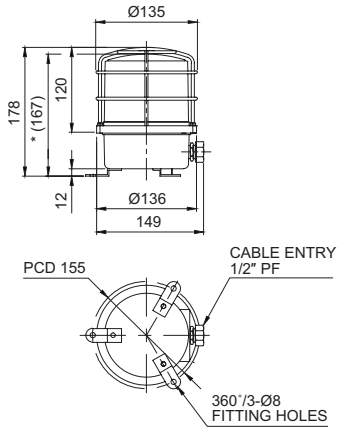
SH1T	220	R	SUS
[Model number]	[Voltage]	[Color]	[Housing materials]
SH1 / SH1P	12-DC12V 24-DC24V 110-AC110V 220-AC220V	R-Red A-Amber G-Green B-Blue	None - AI SUS - STS316L
SH1T / SH1TP SH2 / SH2P SH2T / SH2TP			

SH1 / SH2 Series

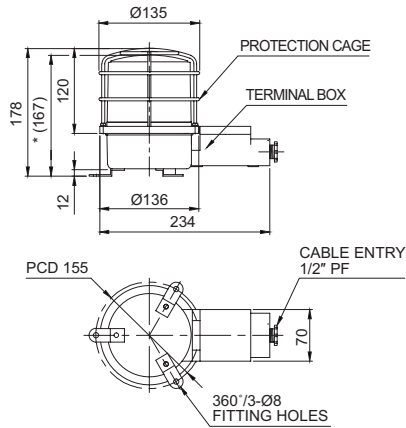
Technical Diagram

Units: mm

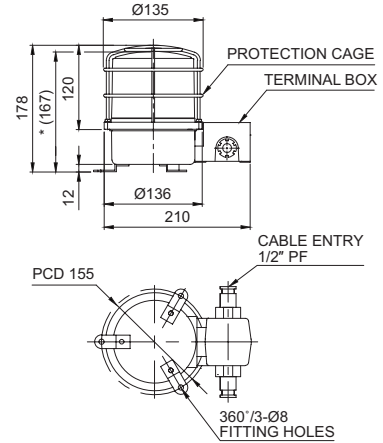
·SH1LRP(-SUS) / SH1LP(-SUS) / SH1SP(-SUS) / SH1P(-SUS)



·SH1TLRP / SH1TLP / SH1TSP / SH1TP

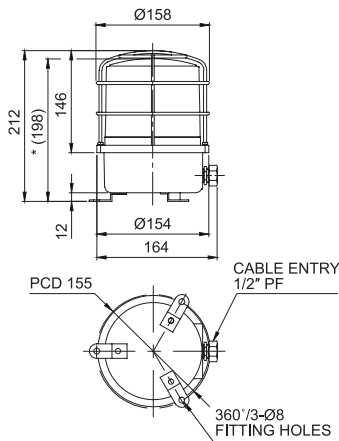


·SH1LR-2TP / SH1L-2TP / SH1S-2TP / SH1-2TP (Cable entry 2EA type)

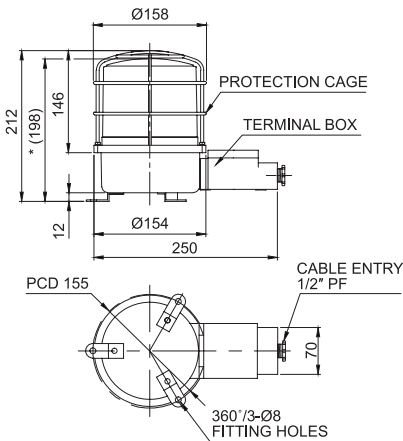


※ *(167) represents SH1LR(-SUS)/ SH1L(-SUS)/SH1S(-SUS)/ SH1(-SUS), SH1TLR/ SH1TL/ SH1TS/ SH1T size without protection cage.

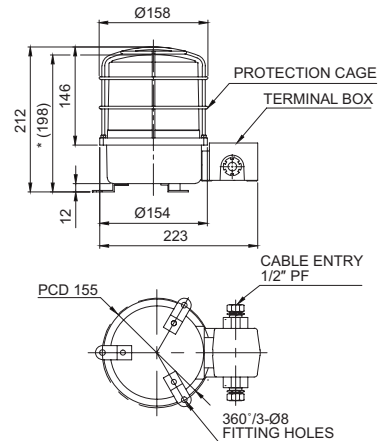
·SH2LRP / SH2LP / SH2SP / SH2P



·SH2TLRP / SH2TLP / SH2TSP / SH2TP



·SH2LR-2TP / SH2L-2TP / SH2S-2TP / SH2-2TP (Cable entry 2EA type)



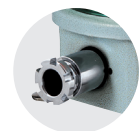
※ *(198) represents SH2 Series size without protection cage.

Wiring Instructions

· SH1(-SUS), SH1LR(-SUS), SH2, SH2LR : Black output line is negative(-).

Customization

- 3/4" PF Cable entry
Standard cable entry is 1/2" PF, 3/4" PF is customization
- Built-in cable gland type
Flexible connector is equipped to the standard cable entry
- Brass housing product
Color will be MUNSELL No. 7.5BG 7/2 when released.
- 2T type has 2 cable entries in the terminal box
2 cable entries terminal box is a customized add-on.



Built-in cable gland



Brass housing product



2 cable entries terminal box model