

Signal Beacon & Electronic Sounder Combinations

SC Series



SC Series can combine all of our Signal Beacon and Electronic Sounder products into a single combination model depending on your specific needs

PRODUCT SPECIFICATION

SC1

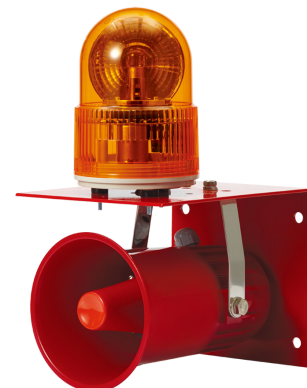
Ambient operating temperature -20°C to +50°C

Sound volume 15 signal sounds : Max.108dB at 1m

Voice signal : 95-102dB at 1m

Protection rating IP44

- Standard combination includes S100R products combination with SRN (same as pictured to the Right)
- ※ Volume and protection level may change depending on the combination.



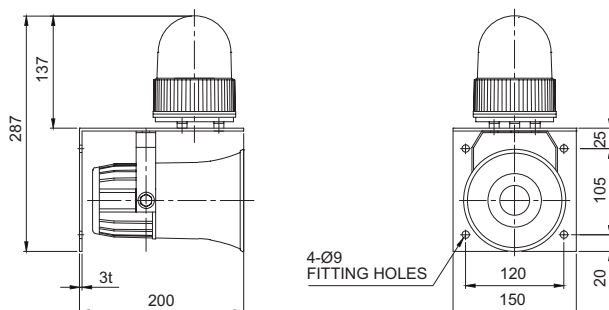
SC1

SC1 The budget model of small-sized Signal Beacon and Electronic Sounder combinations

Technical Diagram

Units: mm

·SC1



Customization

Signal beacon : Select one from S100 Series for the combination

Electronic sounder : Select one from SN, SRN, SEN15/ 25 for the combination

PRODUCT SPECIFICATION

SC2

Ambient operating temperature -20°C to +50°C

Sound volume 15 signal sounds : Max.105dB at 1m

Voice signal : 94-101dB at 1m

Protection rating IP44

- Standard combination includes S125U products combined with the SEN15 (same as pictured to the right)
- ※ Volume and protection level may change depending on the combination.



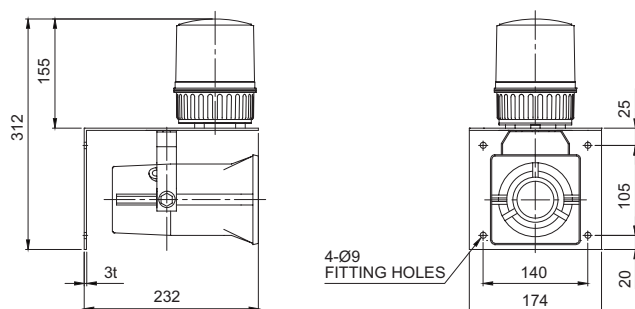
SC2

SC2 Most commonly used standard-sized Signal Beacon and Electronic Sounder combinations

Technical Diagram

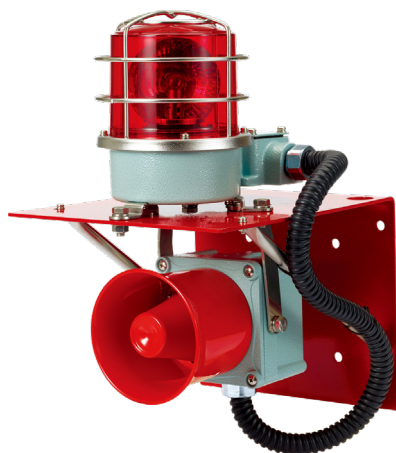
Units: mm

·SC2



Customization

- Signal beacon : Select one from S125 Series for the combination
- Electronic sounder : Select one from SN, SRN, SEN15/ 25 for the combination



SC3

PRODUCT SPECIFICATION

SC3

Ambient operating temperature -20°C to +50°C

Sound volume 15 signal sounds : Max.114dB at 1m

Voice signal : 108-113dB at 1m

Protection rating IP56

- Combination of SH1-2T and signal horn SEWN30L(Same as pictured to the left)

※ Volume and protection level may change depending on the combination.

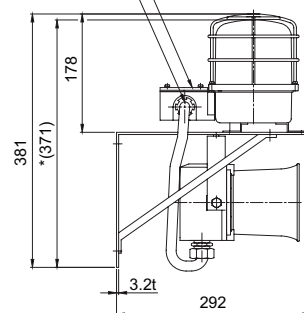
SC3 Waterproof, dustproof type Signal Beacon and Electronic Sounder combinations

Technical Diagram

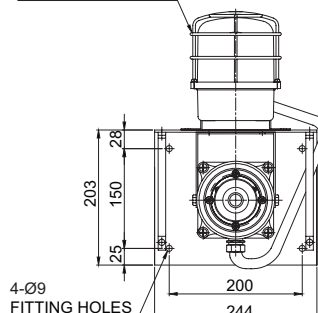
Units: mm

SC3

TERMINAL BOX
CABLE ENTRY
PF 1/2"



PROTECTION CAGE



※ * (371) represents without protection cage.

Customization

- Signal beacon : Select between models SH1P-2T and SH2P-2T Series
- Electronic sounder : Choose one model among SEWN30L/50L, SEWN50L, SEHN25, and SEHN50

Standard Model Number

SC1	-	220	-	R
[Model number]		[Voltage]		[Color]
SC1(S100R+SRN)		12-DC12V		● R-Red
SC2(S125U+SEN15)		24-DC24V		● A-Amber
SC3(SH1P-2T+SEWN30L)		110-AC110V		● G-Green
		220-AC220V		● B-Blue

Ordering Specification

SC3	-	(SH1P-2T	-	R	-	SEWN30L	-	WS)	-	220
[Model number]			[Light type]		[Color]		[Horn type]		[Sound]			[Voltage]
SC1			Select 1 model among S100 Series		● R-Red ● A-Amber ● G-Green ● B-Blue		Select 1 model among SN, SRN and SEN15/25		WS-Warning sounds WP-Special warning sounds WM-Melodies WA-Alarms WV-Customizable voices			12-DC12V 24-DC24V 110-AC110V 220-AC220V
SC2			Select 1 model among S125 Series				Select 1 model among SN, SRN and SEN15/25					
SC3			Select 1 model among SH1P-2T and SH2P-2T Series				Select 1 model among SEWN30L/50L and SEHN25/50					

※ Light sources can be selected among LED revolving, LED steady/flashing, xenon strobe and bulb revolving type.